



# CAAC Design and Construction Update

11-17-2022



# 2022 Projects

## New Buildings & Additions

# Marshdale ES - Replacement HCM – GC GH Phipps

Ribbon Cutting

Oct 24



# Jeffco Open - Auditorium Addition HCM - Bassett

Construction



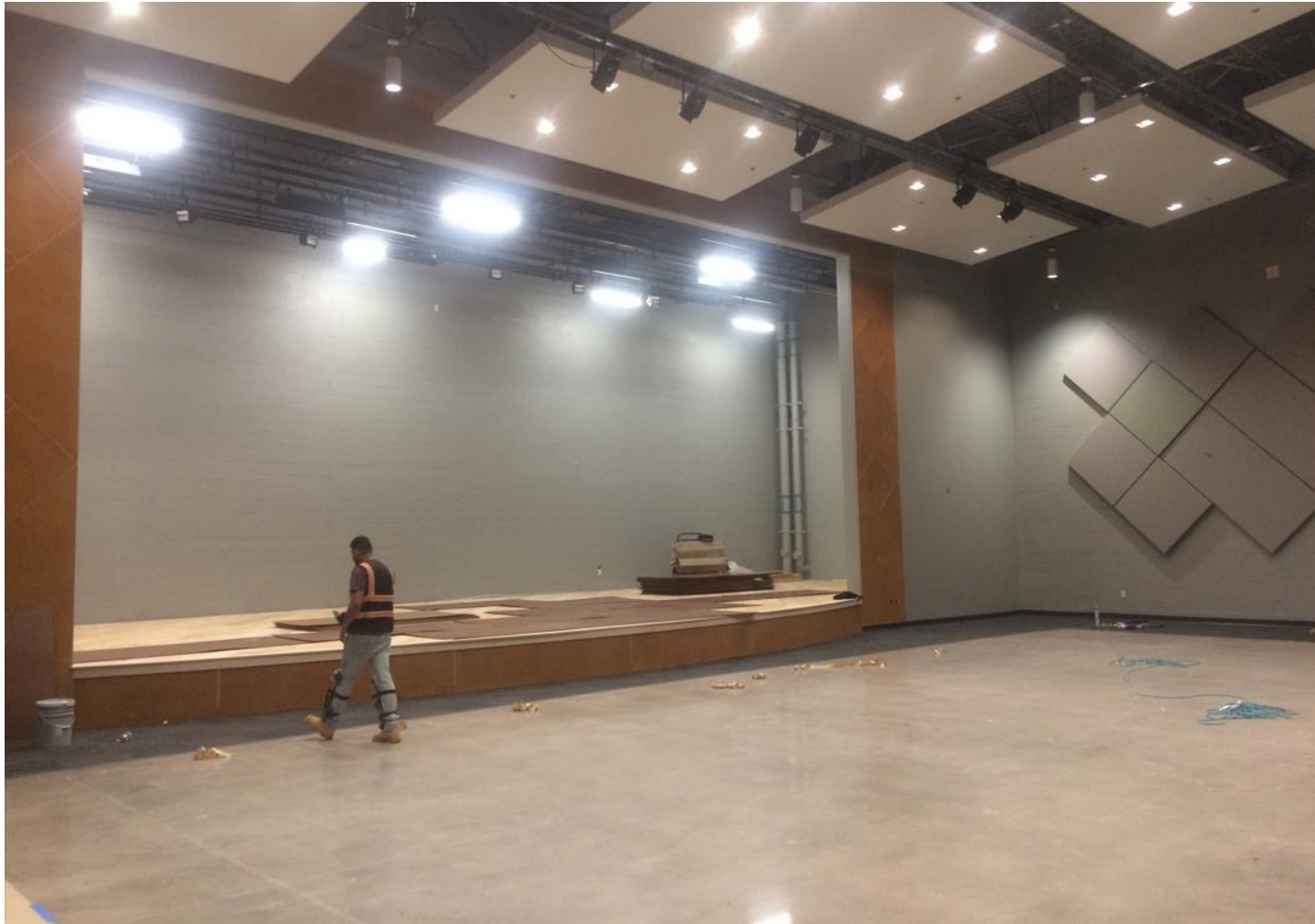
# Jeffco Open - Auditorium Addition HCM - Bassett

Construction



# Jeffco Open - Auditorium Addition HCM - Bassett

Construction



# Prospect Valley ES - Replacement MOA – GH Phipps

Construction  
Move-In Jan 5 2023



# Prospect Valley ES - Replacement MOA – GH Phipps

Construction





# Prospect Valley ES - Replacement MOA – GH Phipps

Construction



# Prospect Valley ES - Replacement MOA – GH Phipps

Construction



# Prospect Valley ES - Replacement MOA – GH Phipps

Construction



# Standley Lake HS – Aux Gym Addition Cannon – FCI Constructors

Construction



# Standley Lake HS - Aux Gym Addition Cannon – FCI Constructors

Construction



# Ralston Valley HS 10 Additional Classrooms EUA - Himmelman



Ralston Valley HS  
10 Additional Classrooms  
EUA - Himmelman

Construction



# Efficiency Future Ready Windy Peak OEL HCM – Bryan

## Construction





# Efficiency Future Ready Mount Evans OEL

HCM – GH Phipps

Construction



Efficiency Future Ready  
Mount Evans OEL  
HCM – GH Phipps

Construction

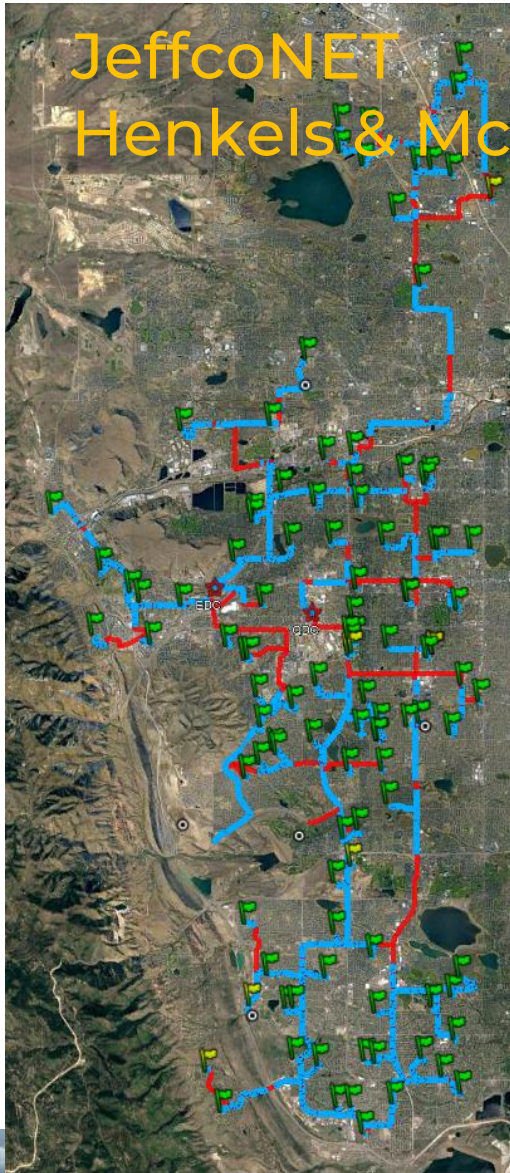


## DW LED 2022 Ackerman – CMGC McKinstry



1. **Brady**
2. **Bradford North**
3. **Bradford South**
4. **Ute Meadows ES**
5. **Leawood ES**
6. **Normandy ES**
7. **Rooney Ranch ES**
8. **Creighton MS**
9. **Moore MS**
10. **Mandalay MS**
11. **Deer Creek MS**
12. **Lawrence**
13. **Weber ES**
14. **Meiklejohn**
15. **West Woods**
16. **Chatfield HS**
17. **Dakota Ridge HS**

# JeffcoNET Henkels & McCoy



## Project Information

Project Start  
April 29, 2020

Total Miles of conduit  
to be bored 114

Miles installed  
98 (86%)

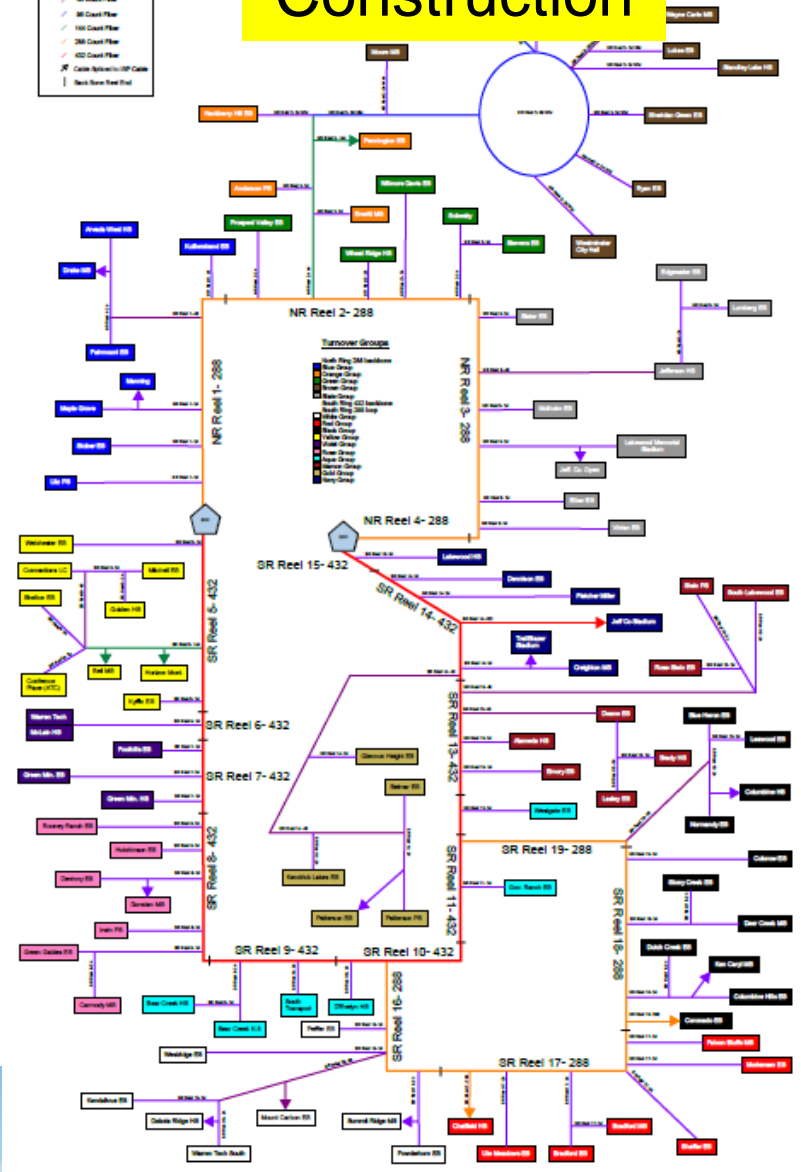
Fiber placed at  
104 of 106 schools  
(MDF to Street)

North Backbone turnover  
to Jeffco Jan 2023



JeffCo

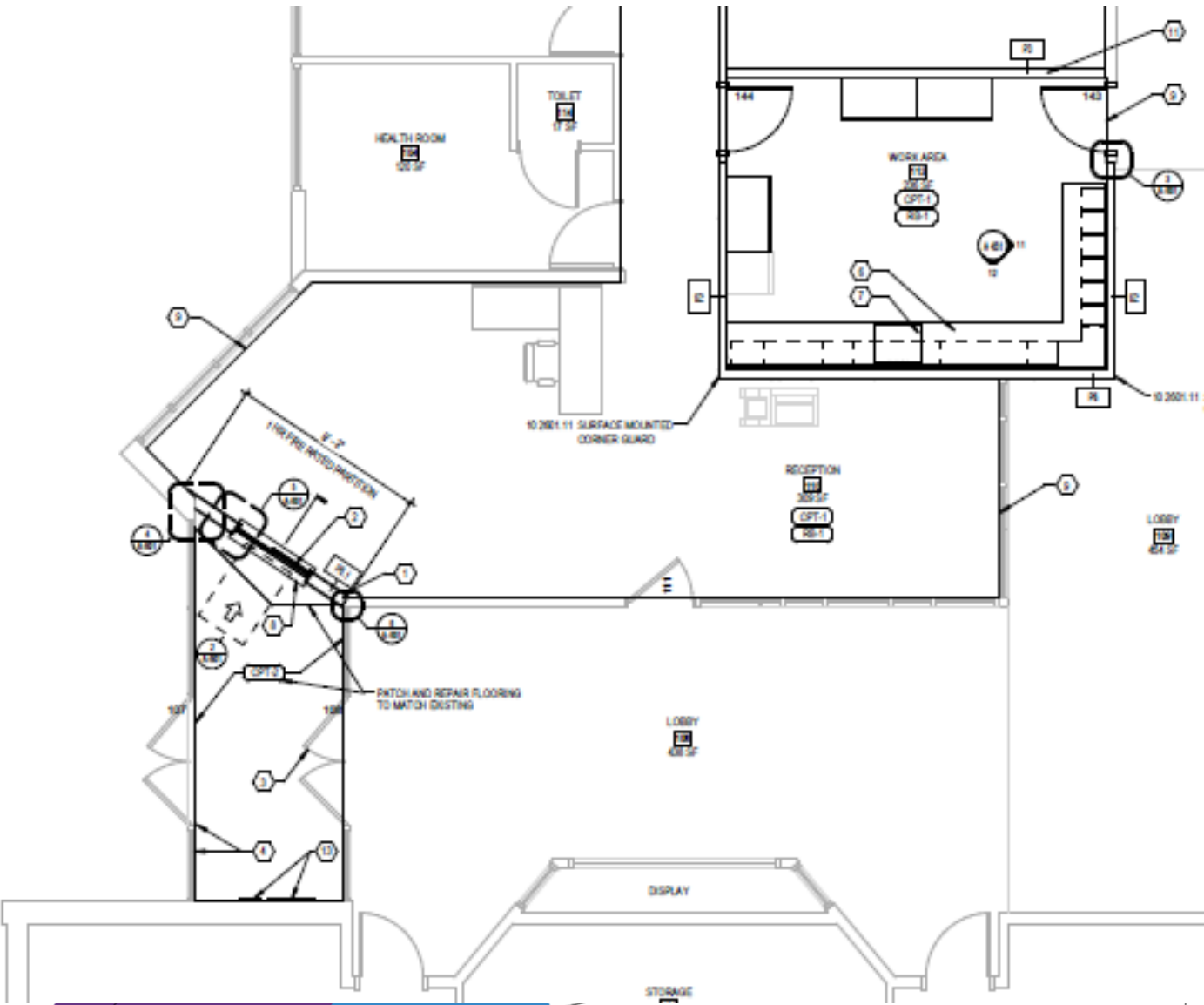
# Construction



# 2023 Efficiency Future Ready & DW projects

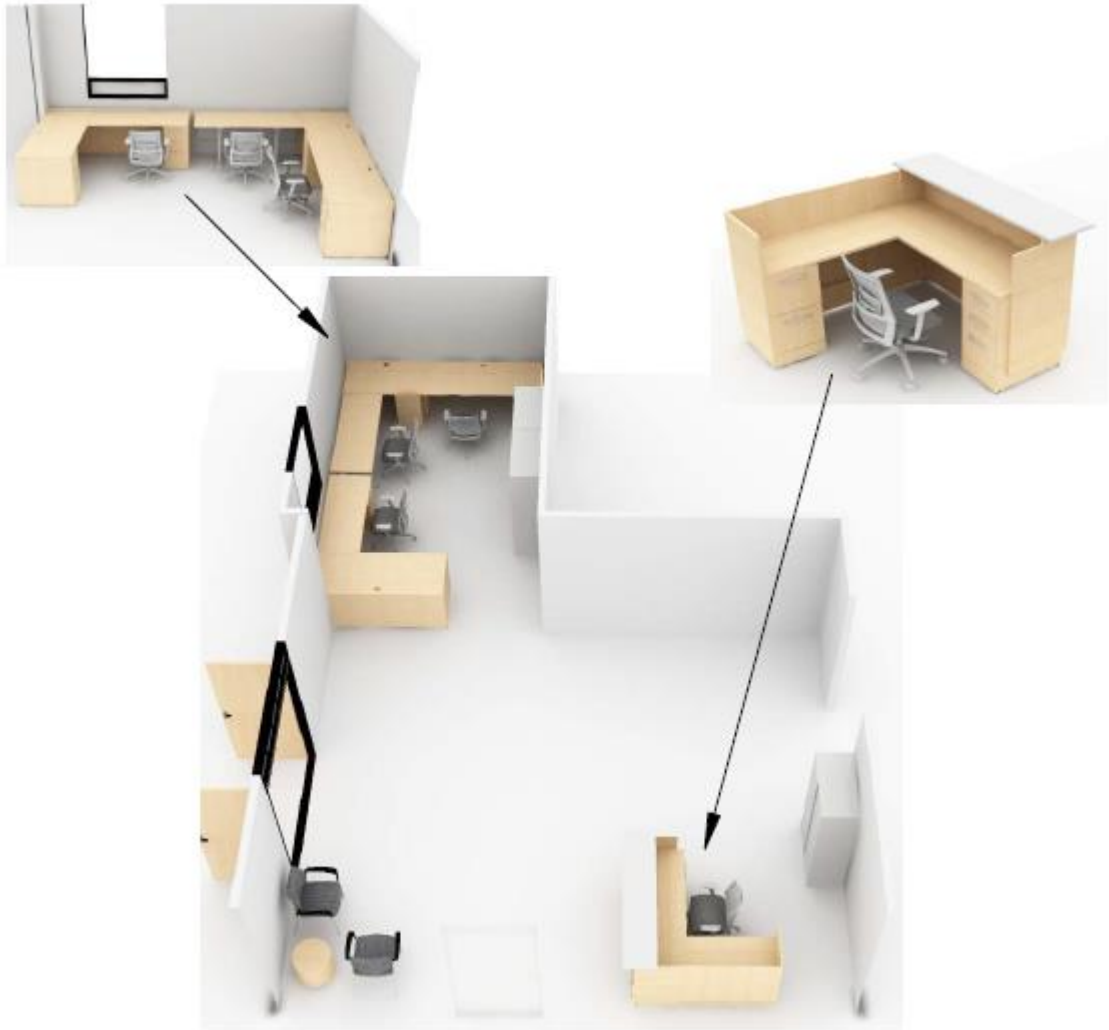
# Ute Meadows ES – Efficiency Future Ready MOA – Crossland

Construction



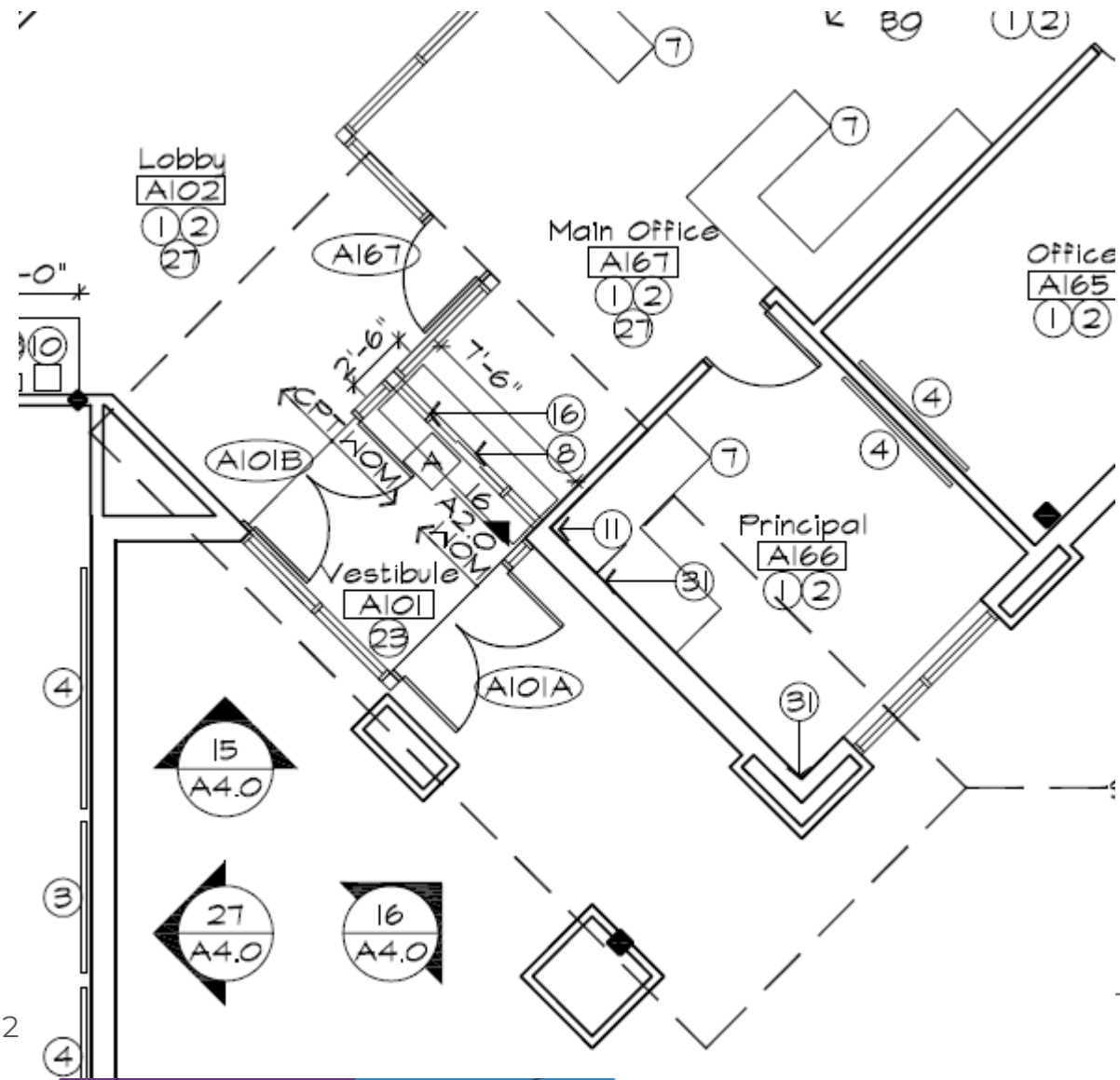
# Blue Heron ES – Efficiency Future Ready MOA – Crossland

Construction



# Mortensen ES – Efficiency Future Ready DLH – Crossland

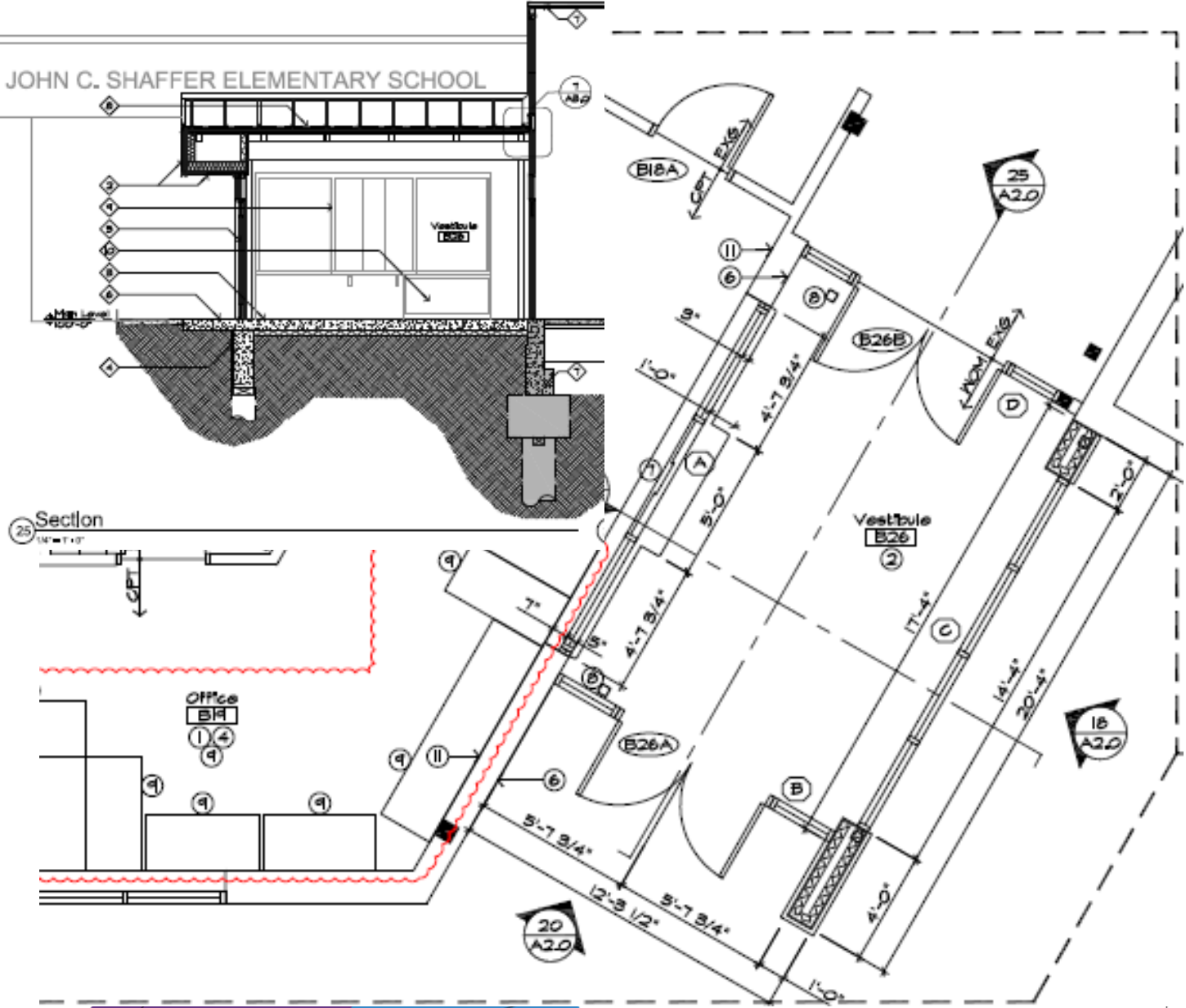
Construction





# Shaffer ES – Efficiency Future Ready DLH – Crossland

Construction



# Wheat Ridge – Chiller

Construction

# Eidos – Chiller Systems



# Wheat Ridge – Electrical SwitchGear

Construction

## Ackerman Engineering – MV Powers



# Efficiency Future Ready Wheat Ridge HS

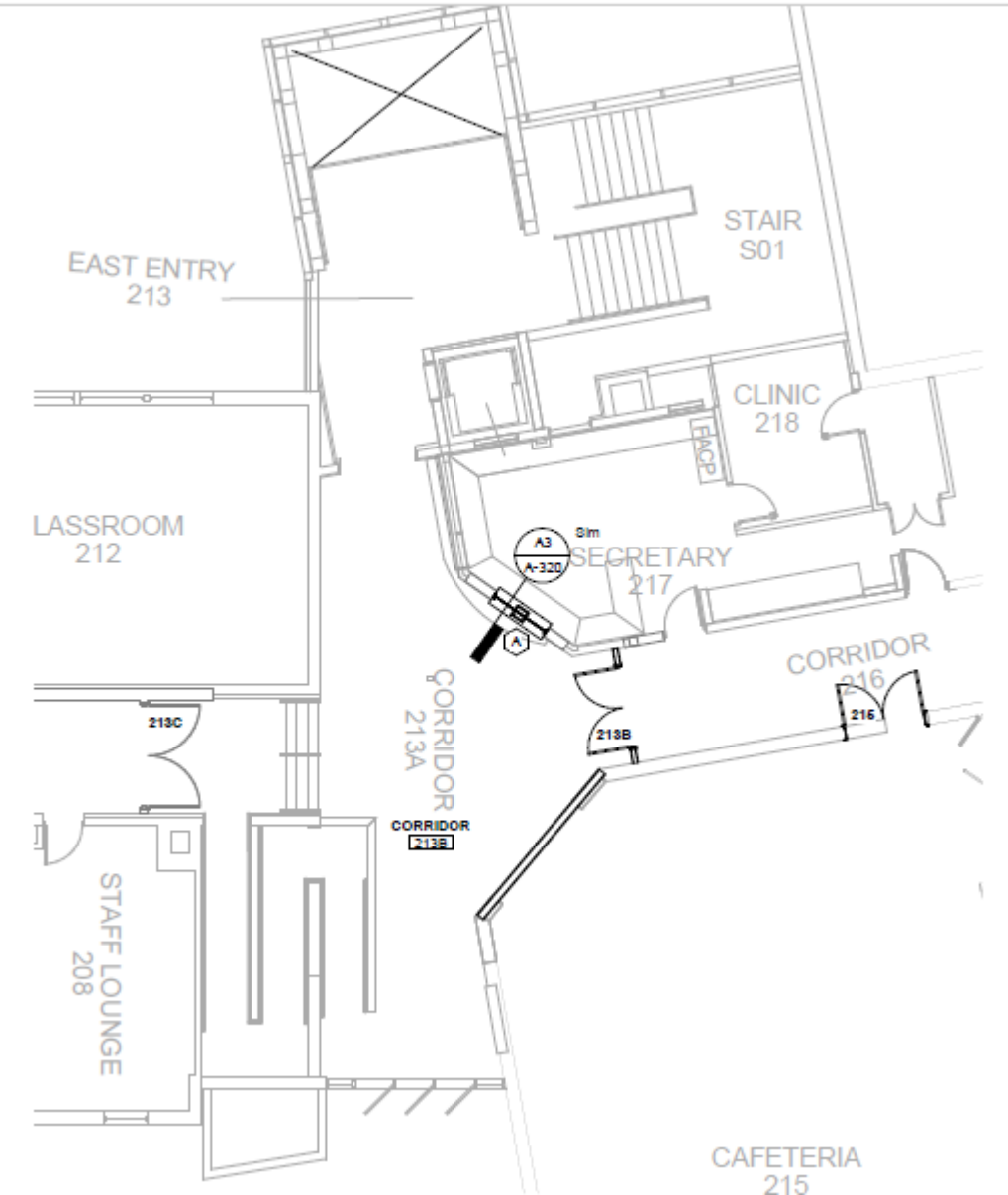
Bids 11/18/22

Eidos – TBD



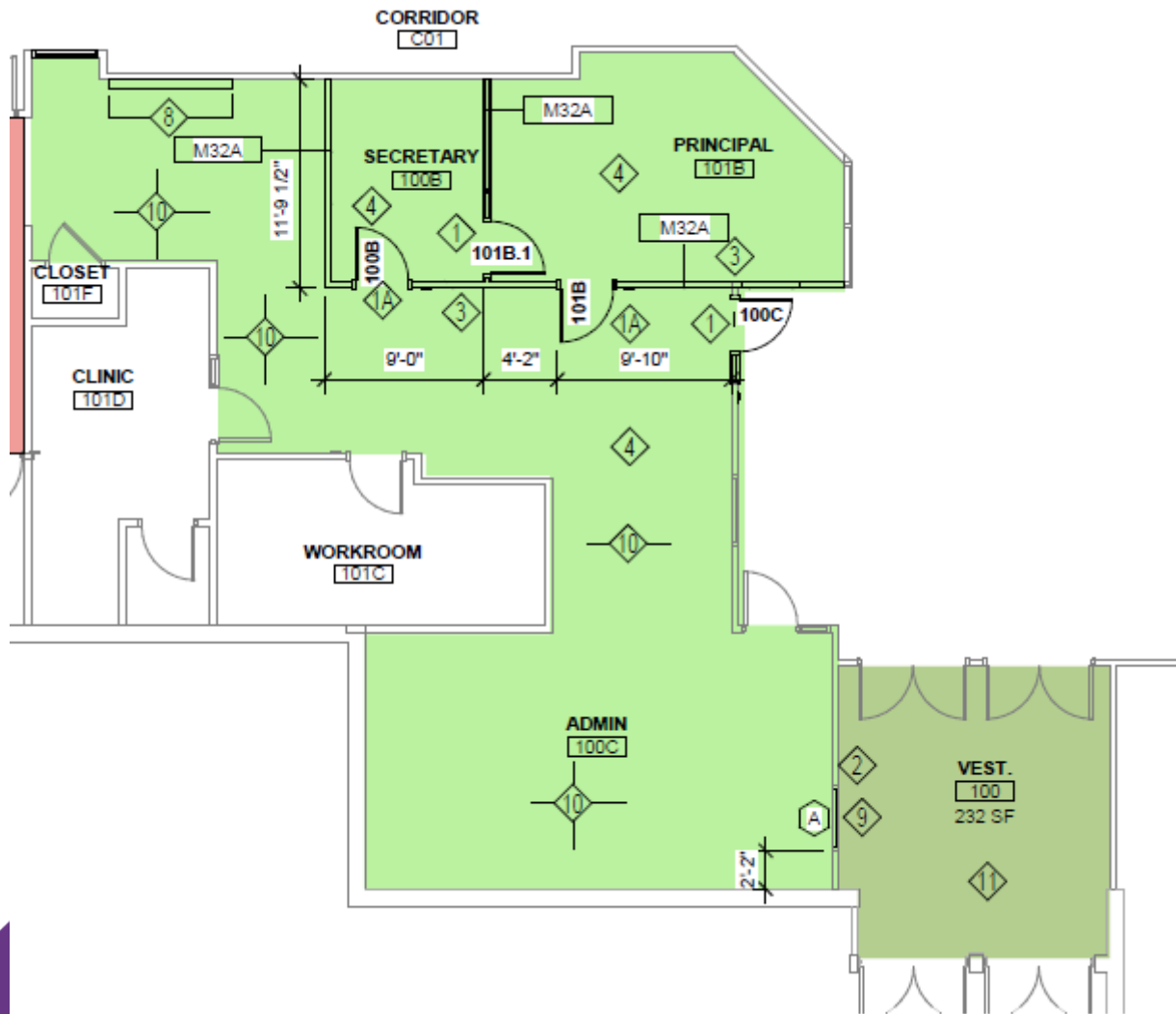
# Edgewater ES – Efficiency Future Ready HCM – TBD

Bids 11/17/22



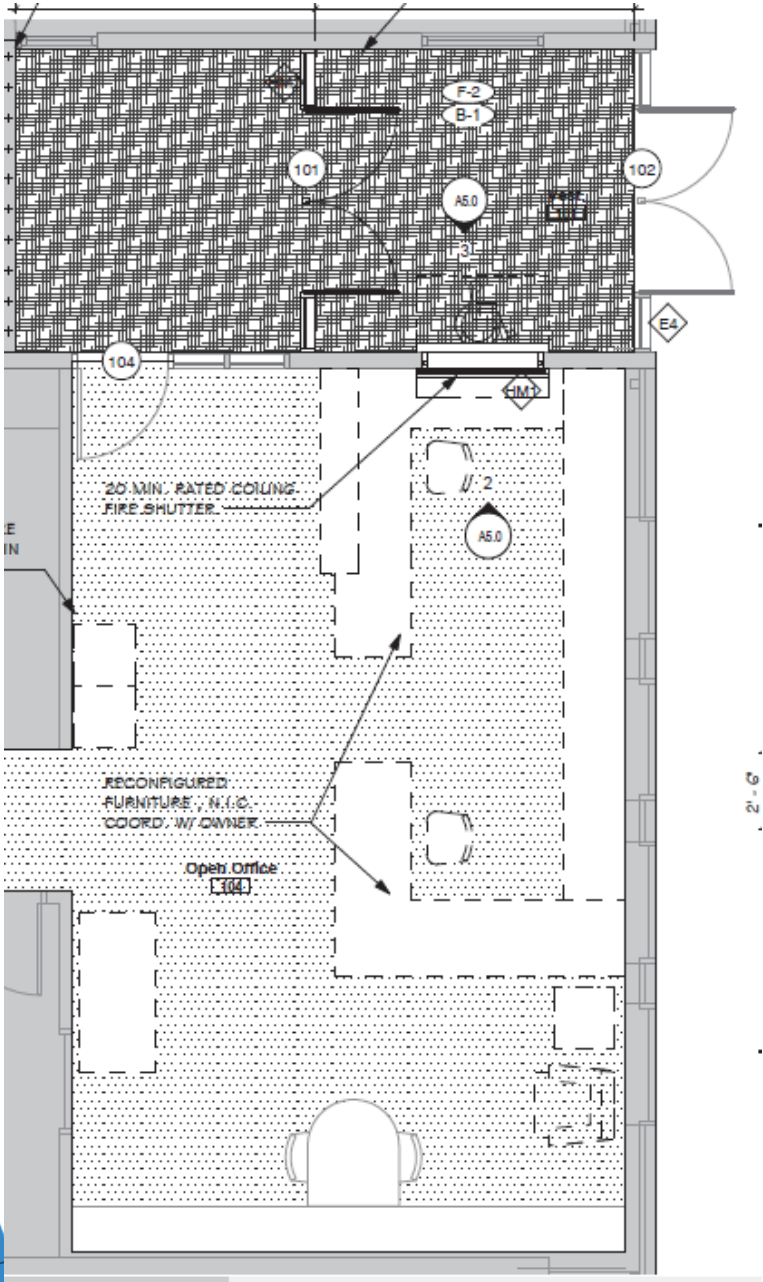
# Ken Caryl MS – Efficiency Future Ready HCM – TBD

Bids 11/17/22



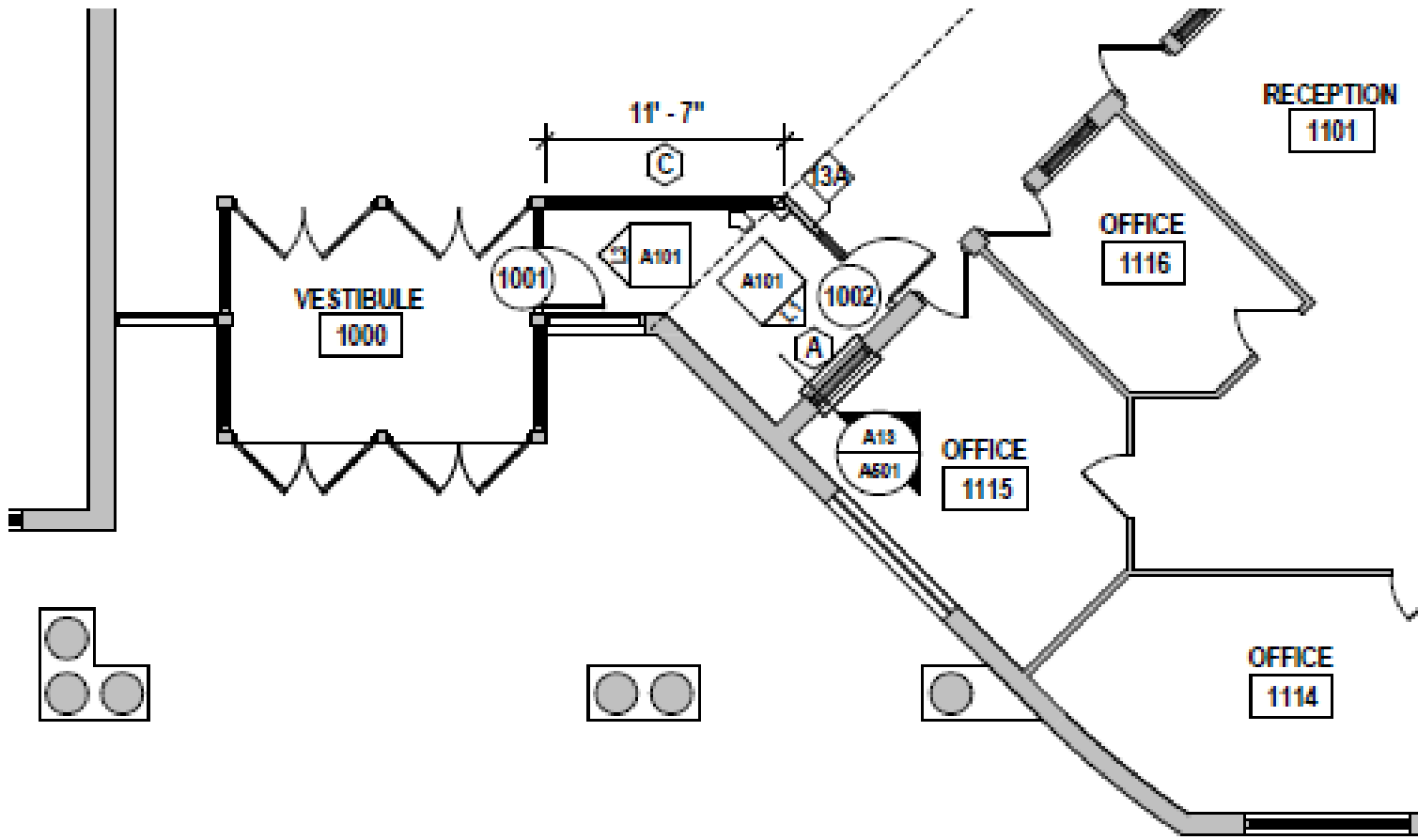
# Mt Carbon – Efficiency Future Ready Eidos – TBD

Bids 12/2/22



# Summit Ridge MS – Efficiency Future Ready H&M – TBD

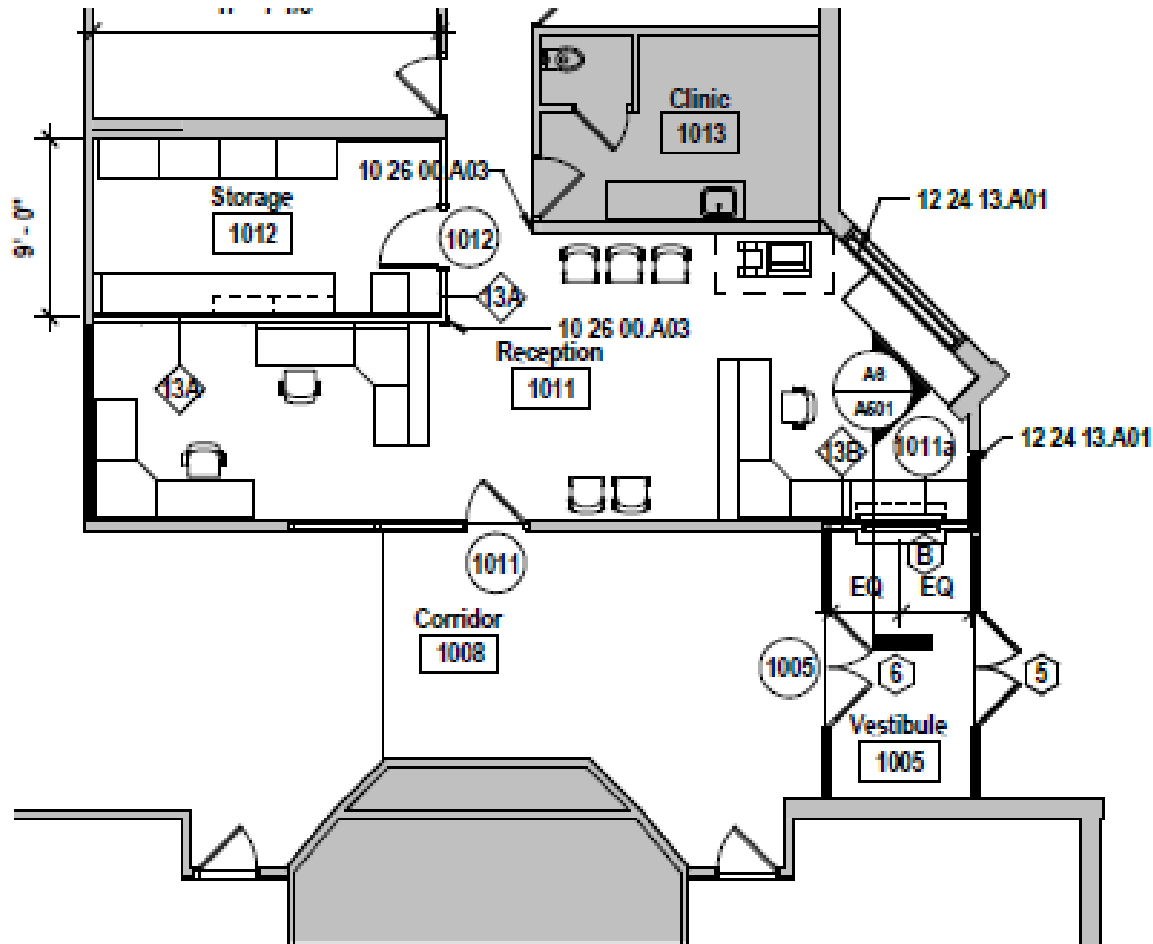
Bids 12/2/22





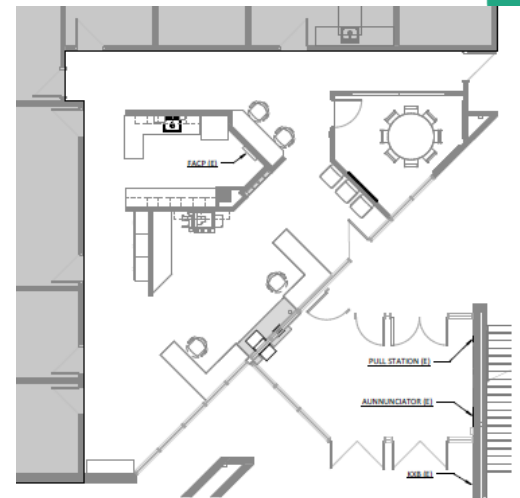
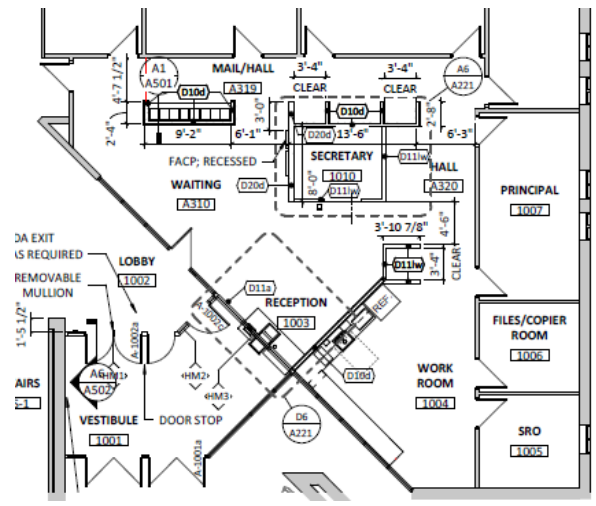
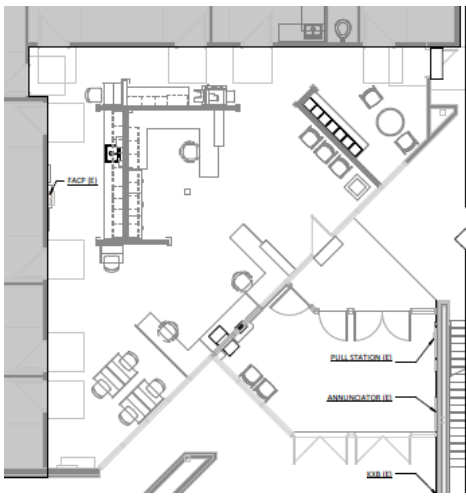
# Kendallvue ES – Efficiency Future Ready H&M – TBD

Bids 12/2/22



# Deer Creek, Mandalay, & Moore MS Efficiency Future Ready RB+B – TBD

Bids 12/06/22



MAIN ENTRY VESTIBULE AND ADMIN SUITE RENOVATION. NO CHANGE TO FREE EGRESS.

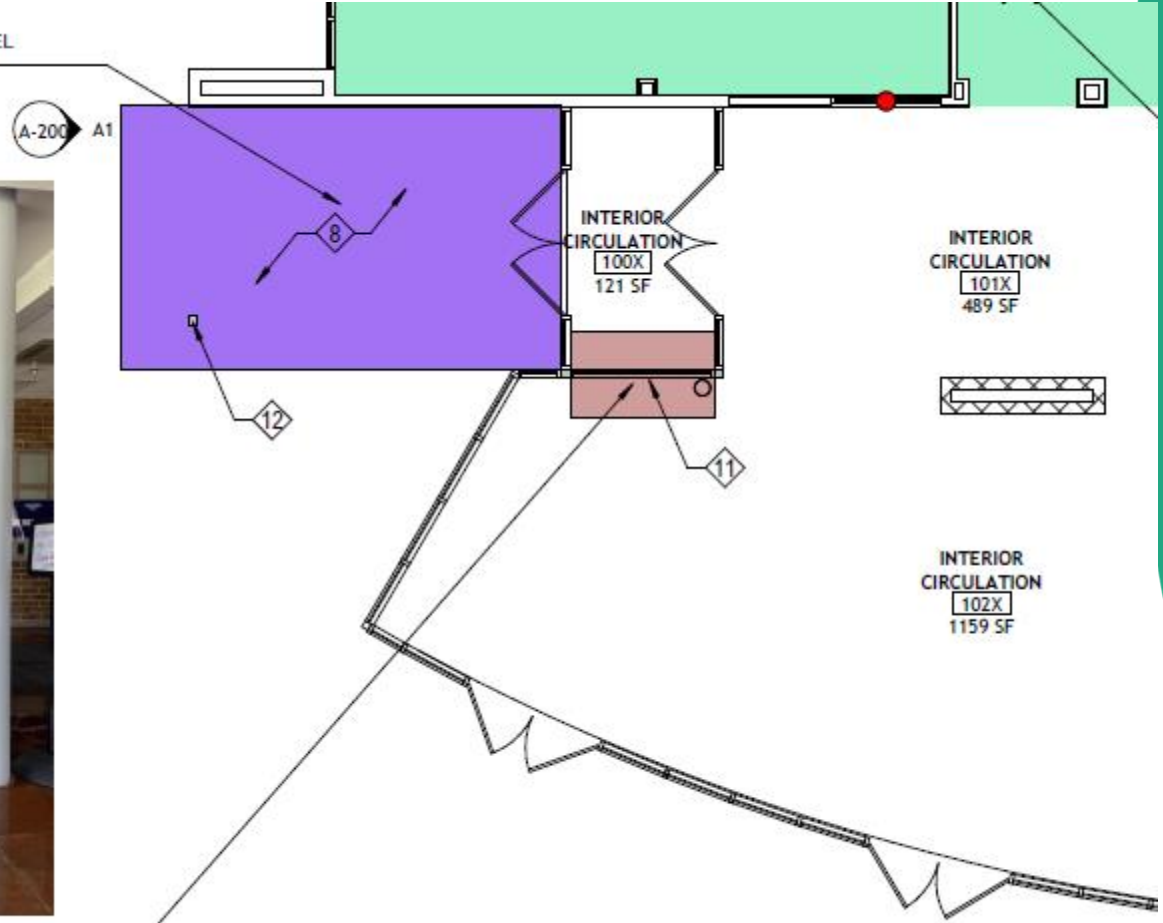
# Warren Tech – Efficiency Future Ready HCM – TBD

Bids 12/8/22

MODIFY EXISTING CANOPY TO PROVIDE RECTANGULAR SHAPED CANOPY. ADD NEW STEEL COLUMN AT NEW CORNER OF CANOPY.

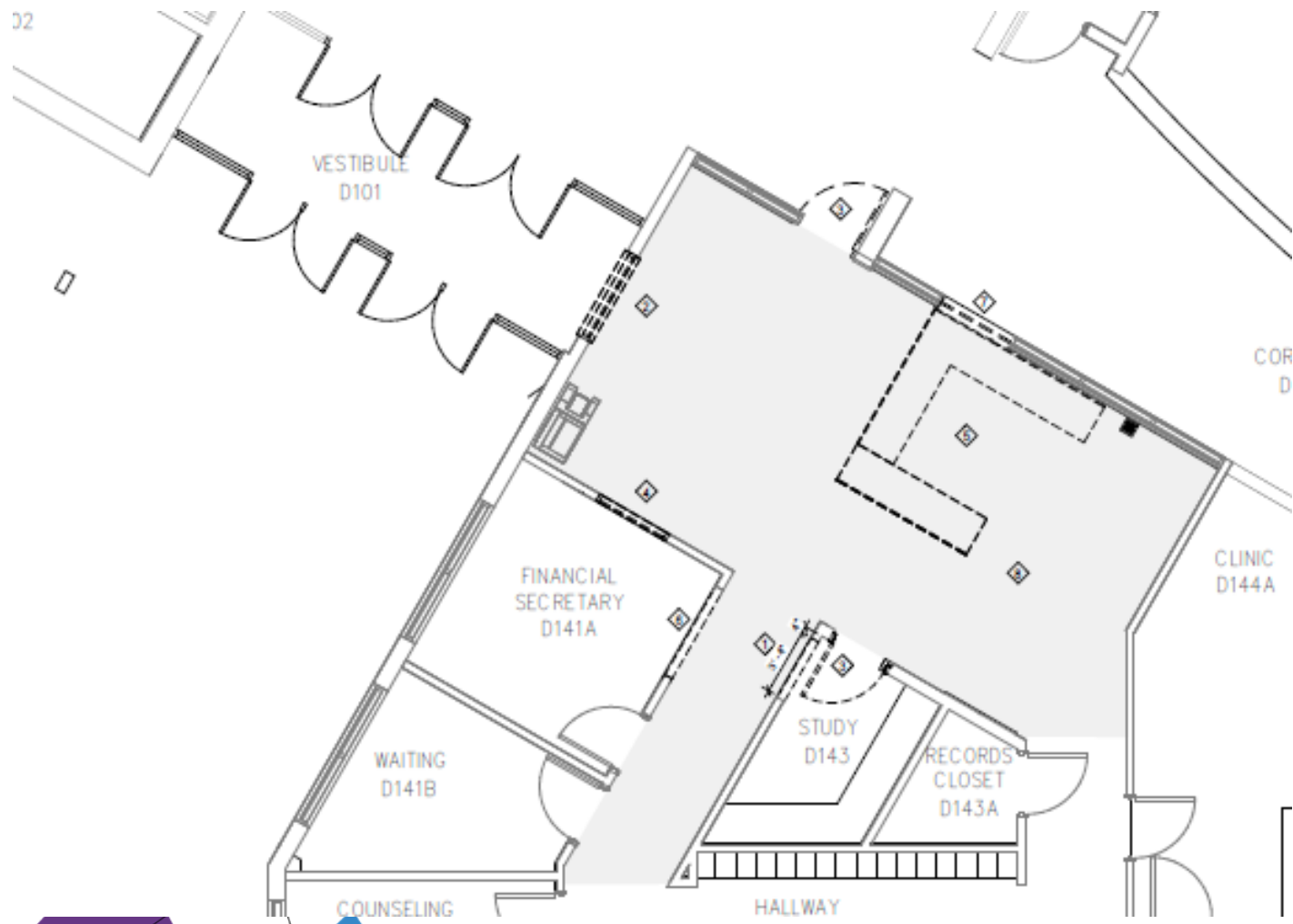


MODIFY EXISTING STOREFRONT AT INTERIOR VESTIBULE TO INSTALL NEW SECURITY TRANSACTION WINDOW



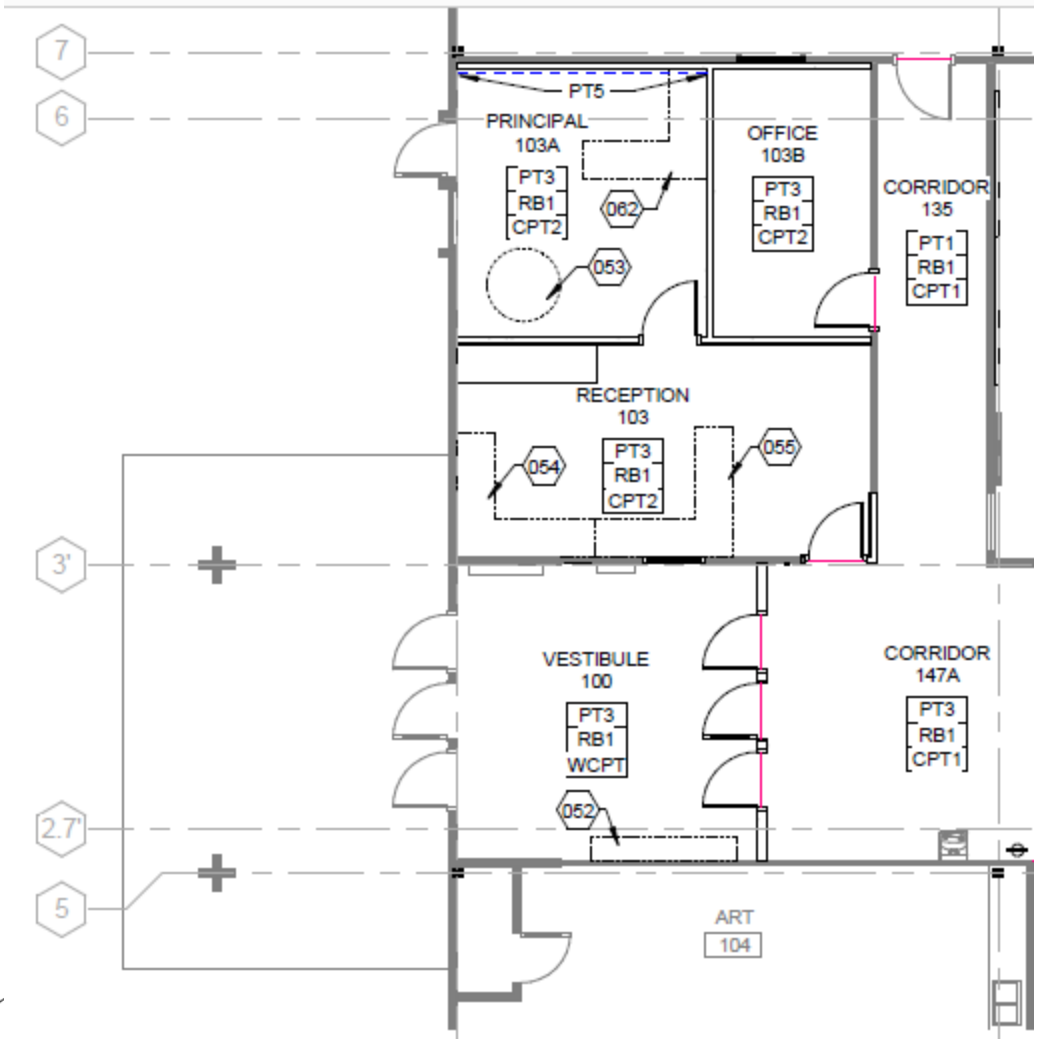
# Dunstan MS – Efficiency Future Ready HCM – TBD

Bids 12/8/22



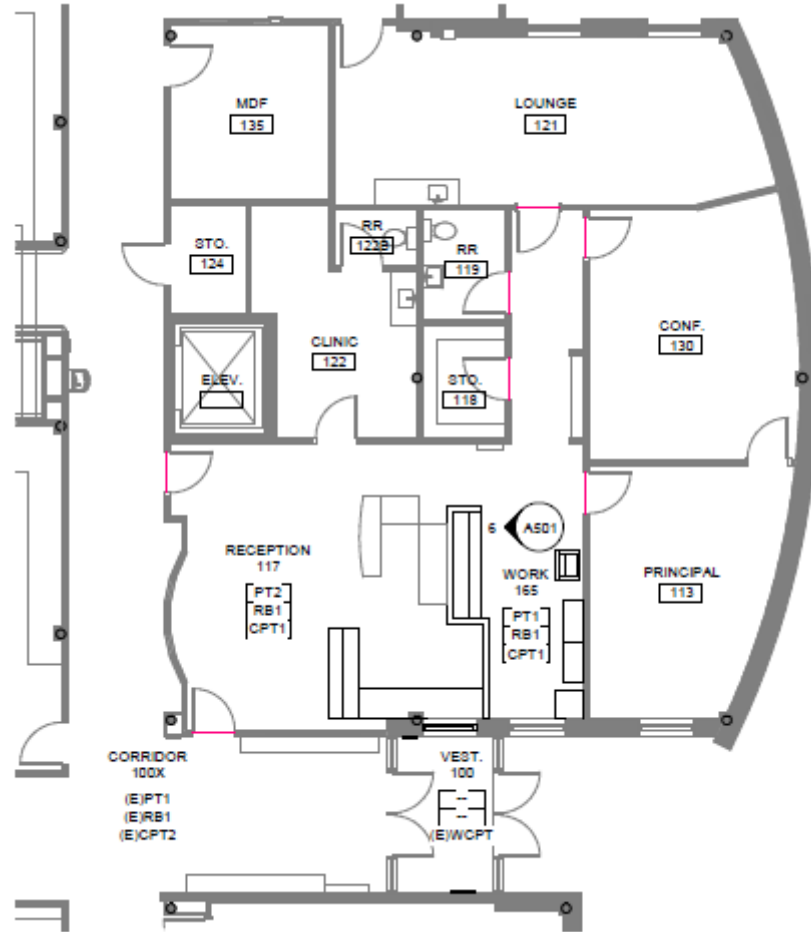
# Little ES – Efficiency Future Ready Treanor HL – TBD

Bids 12/13/22



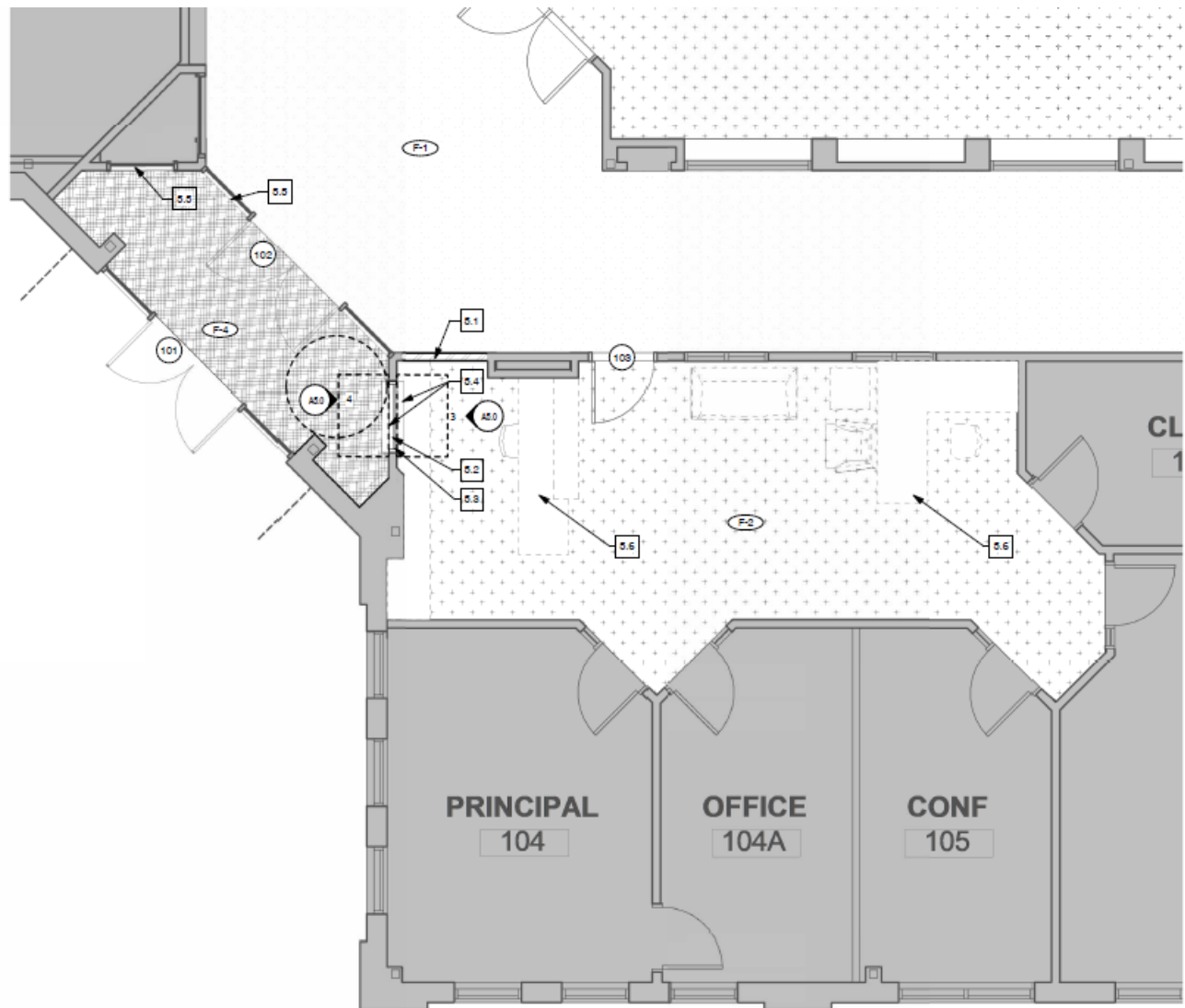
# S Lakewood ES – Efficiency Future Ready Treasor HL – TBD

Bids 12/13/22



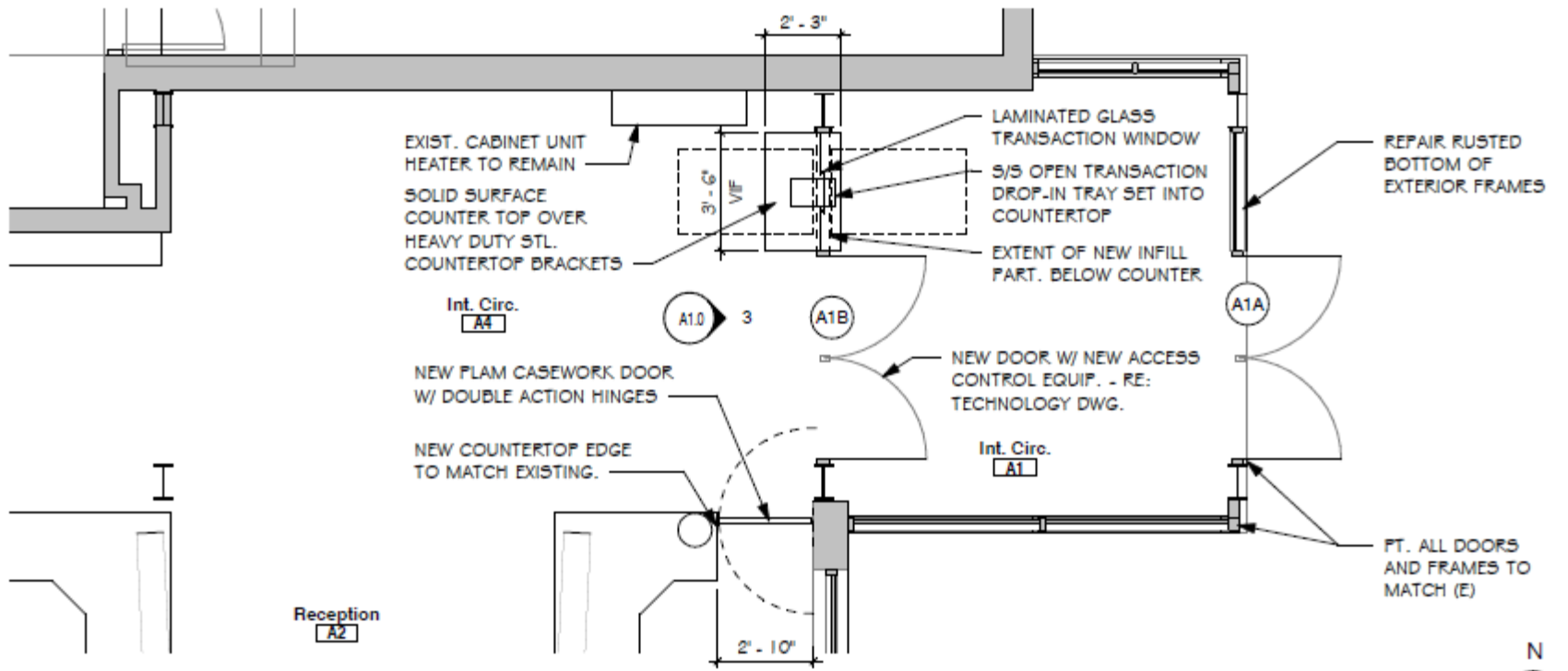
# Sobesky Academy – Efficiency Future Ready Eidos – TBD

Bids 12/14/22



# Pennington ES – Efficiency Future Ready Eidos – TBD

Bids 12/14/22



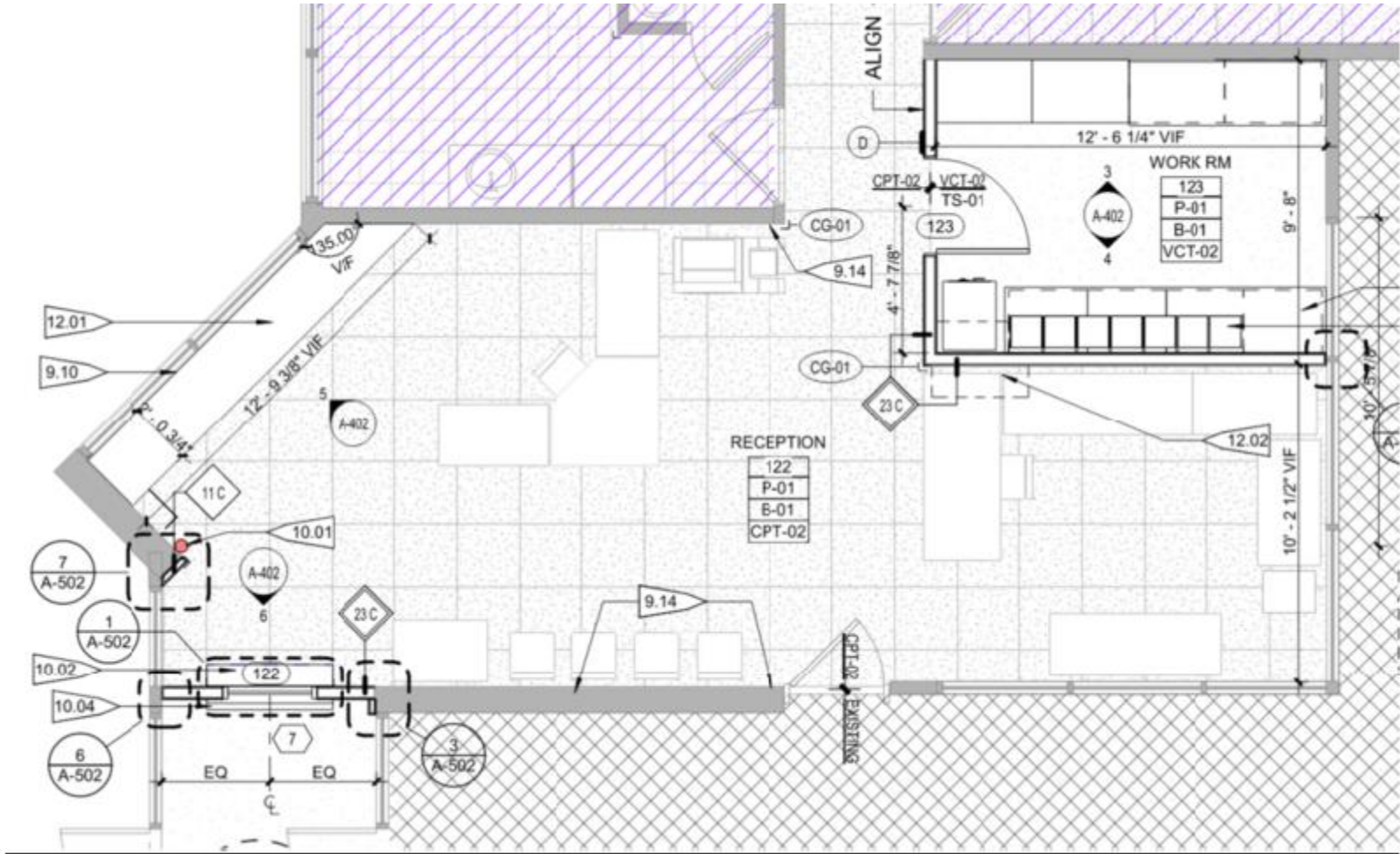
## 2. Enlarged Entry Plan

1/4" = 1'-0"



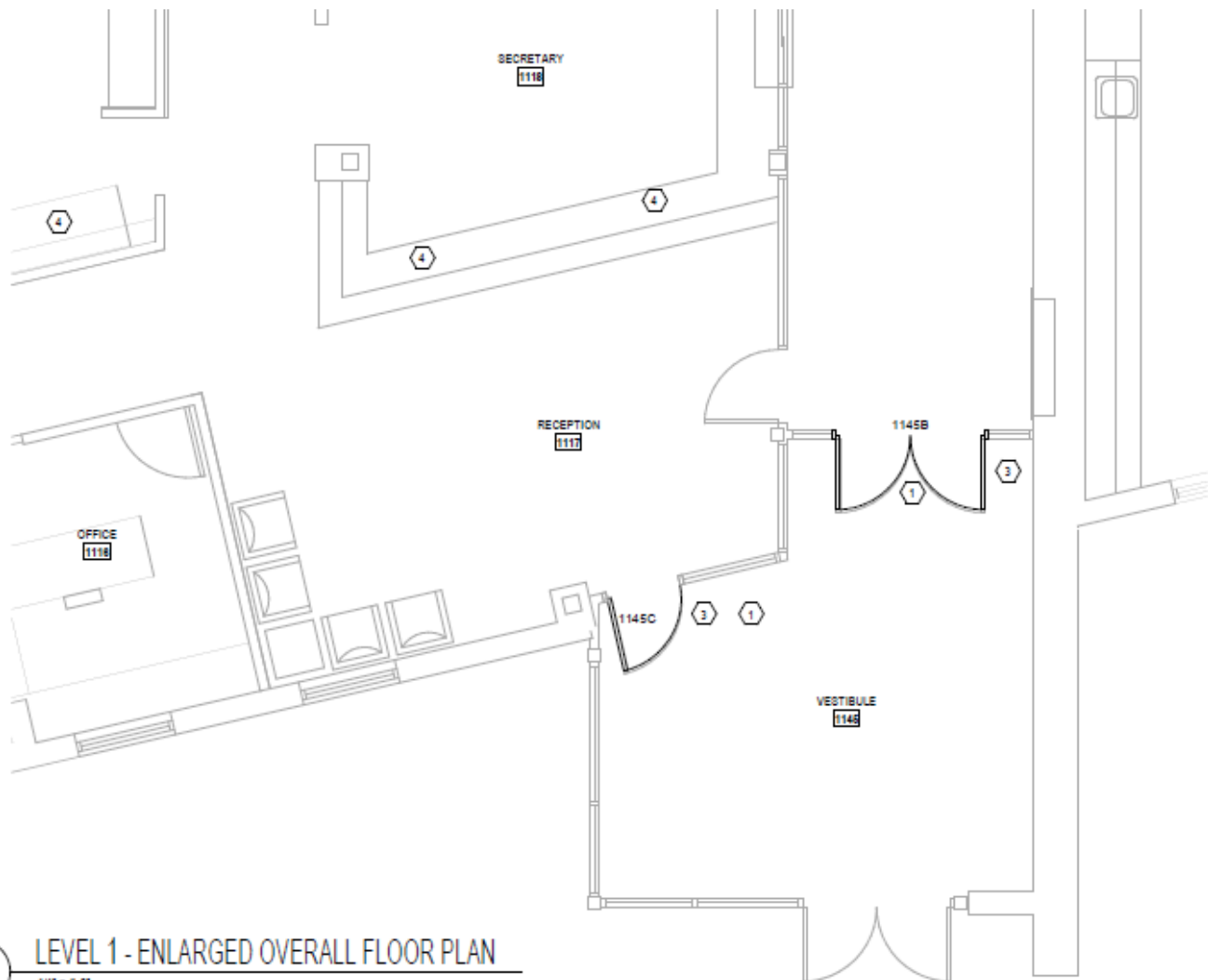
# Governors Ranch – Efficiency Future Ready MOA – TBD

Bids 12/16/22



# Bear Creek K8 – Efficiency Future Ready MOA – TBD

Bids 12/16/22

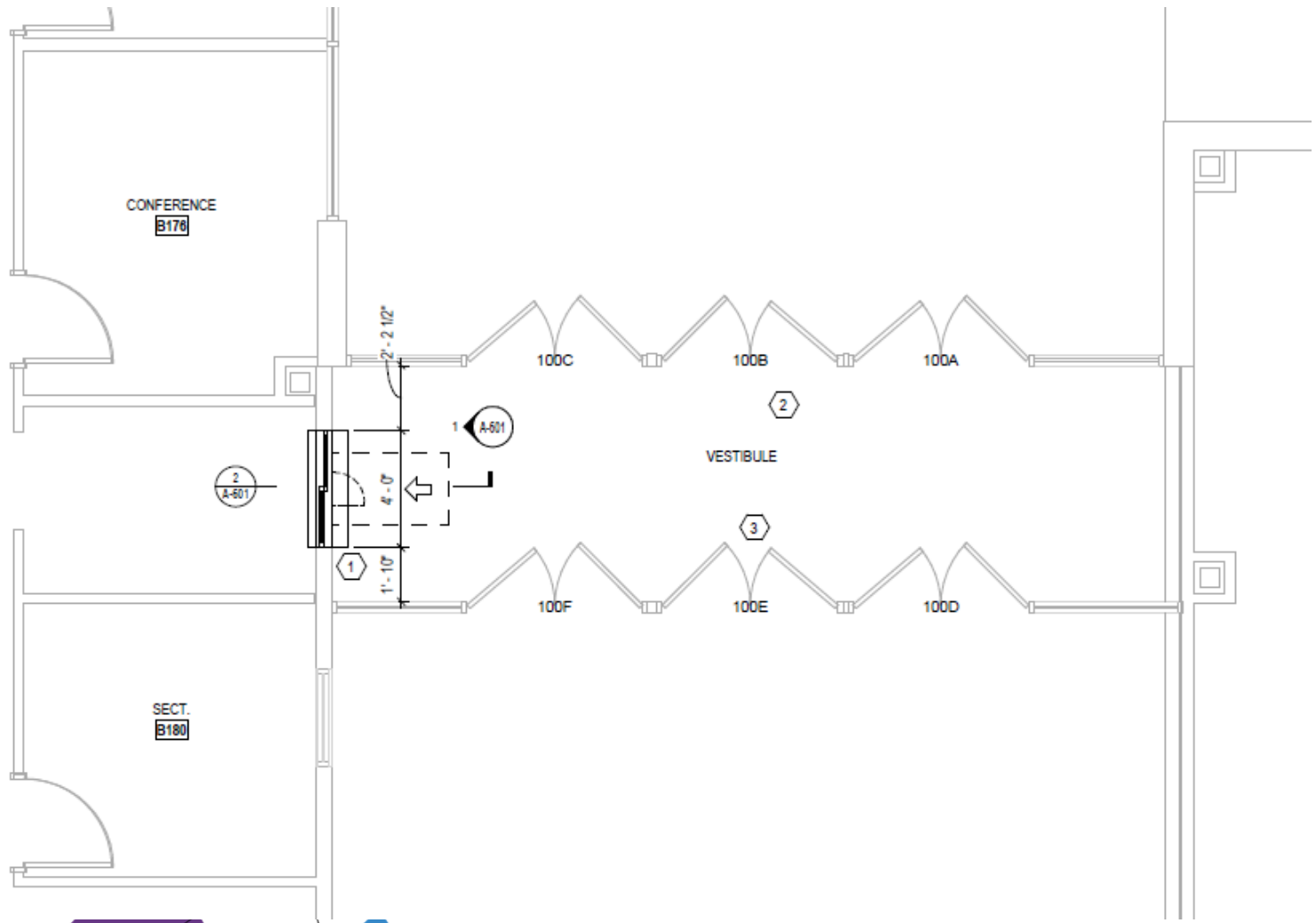


5 LEVEL 1 - ENLARGED OVERALL FLOOR PLAN  
1/4" = 1'-0"



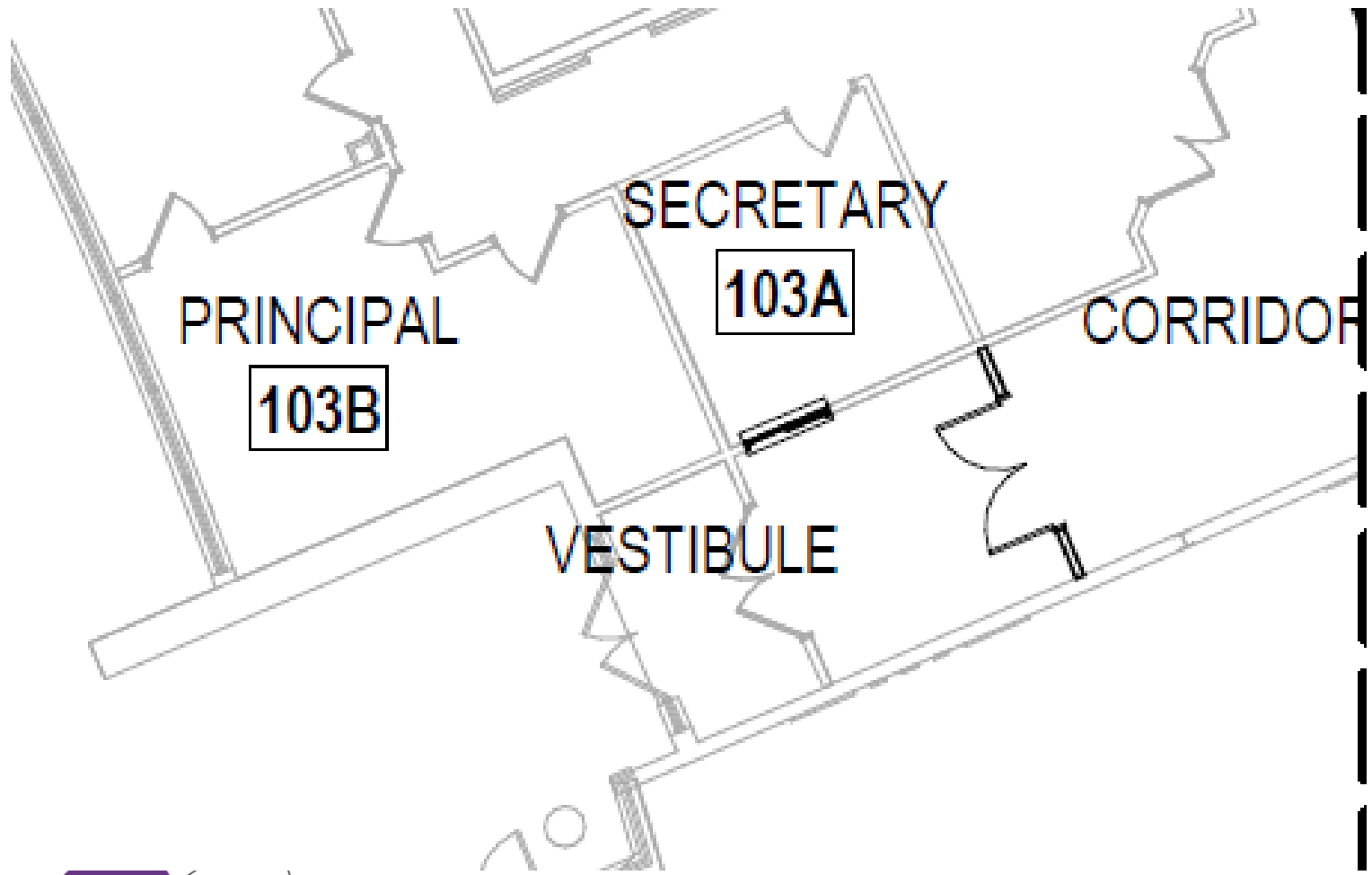
# Falcon Bluffs MS – Efficiency Future Ready MOA – TBD

Bids 12/16/22



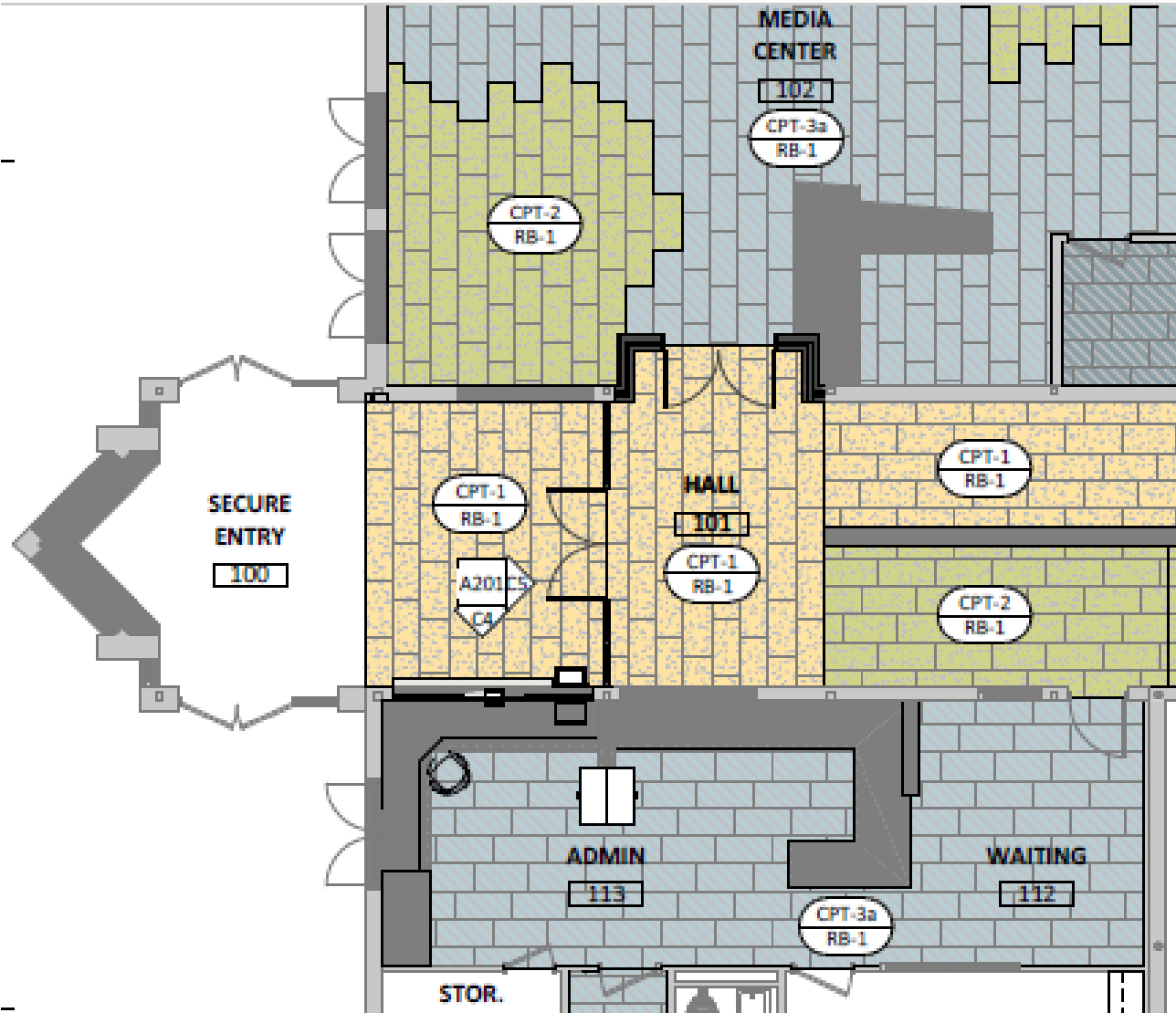
# Drake MS – Efficiency Future Ready MOA – TBD

Bids 12/16/22

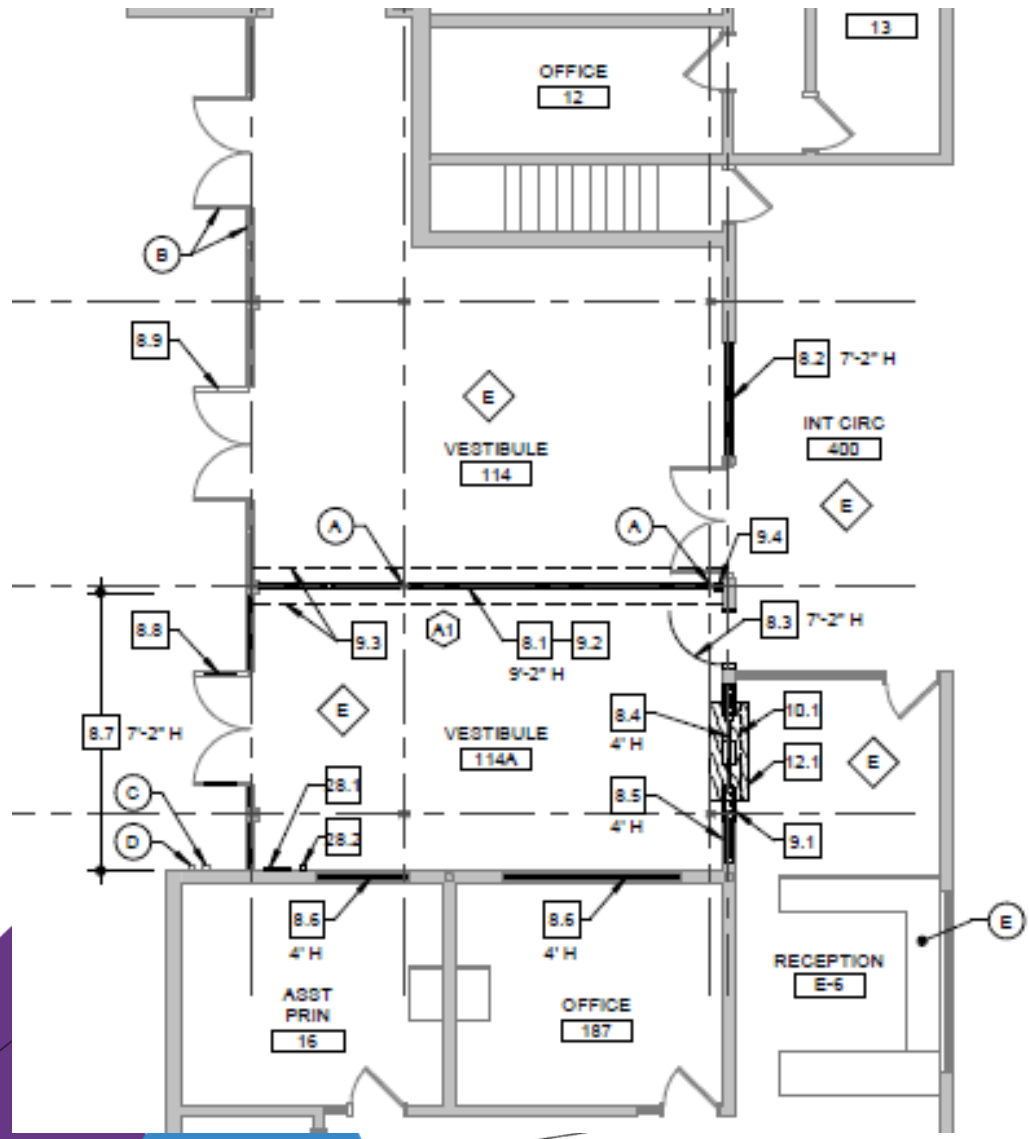


# Coal Creek K8 – Efficiency Future Ready RB+B – TBD

Bids 12/20/22

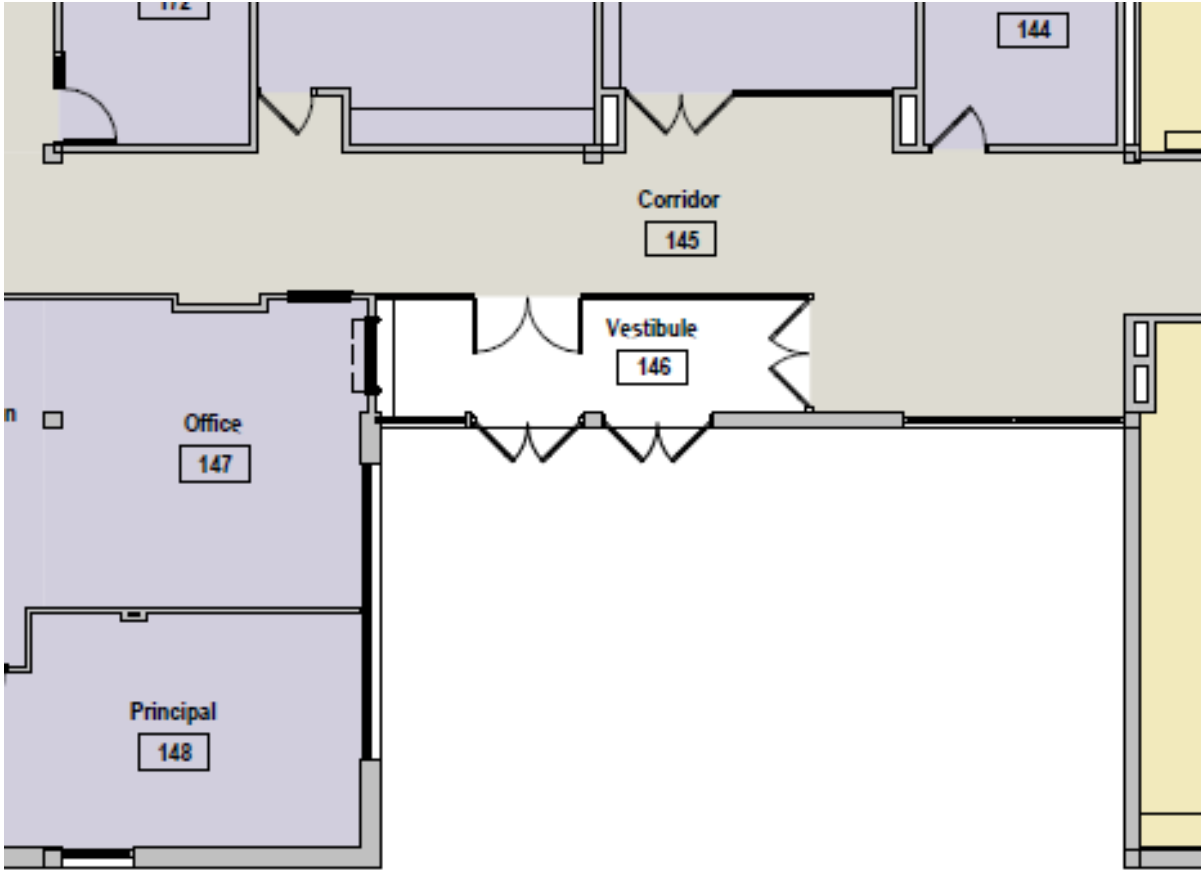


# Oberon MS – Efficiency Future Ready Larson Incitti – TBD



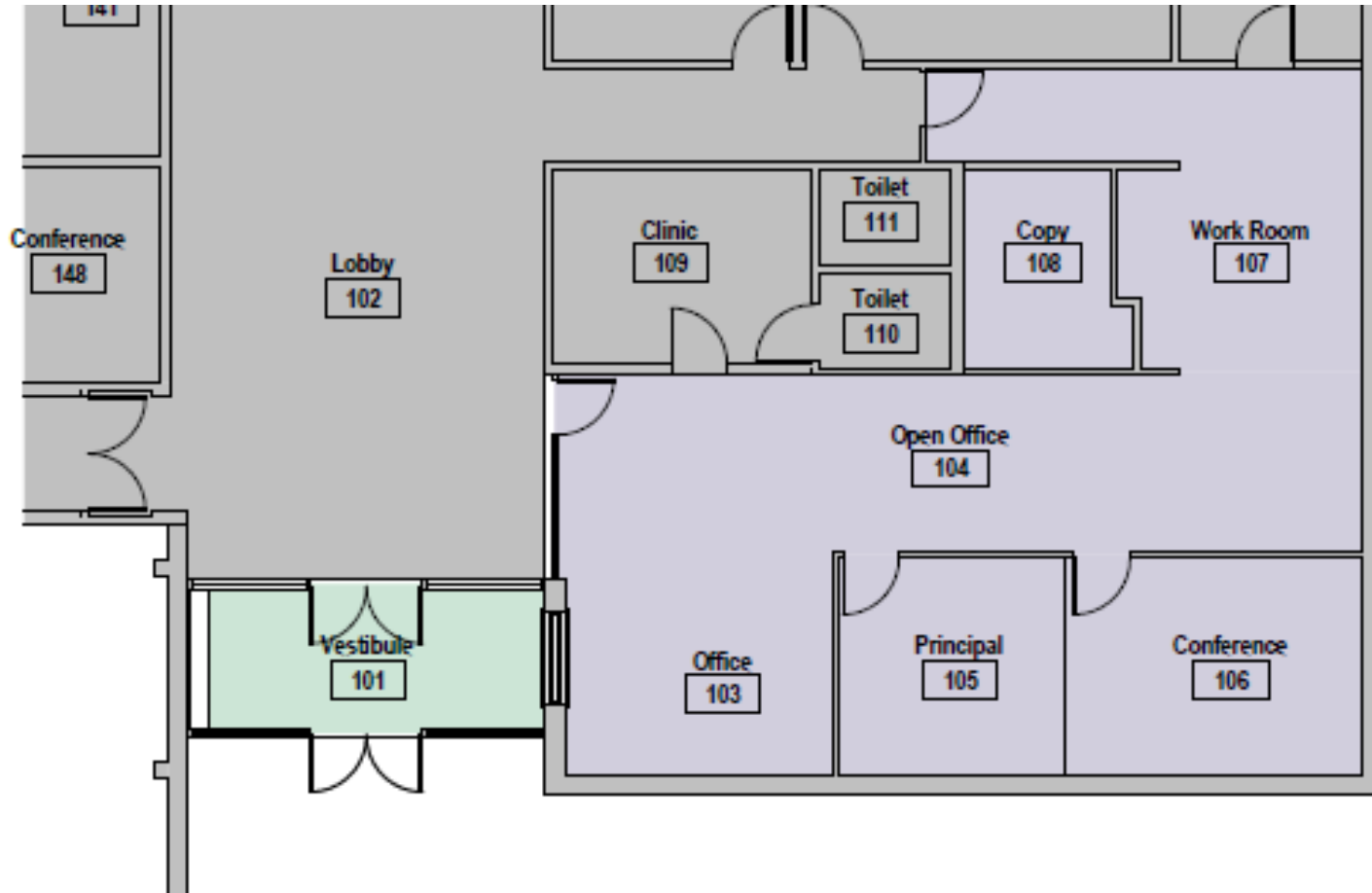
# Swanson ES – Efficiency Future Ready H+M – TBD

CD



# Van Arsdale ES – Efficiency Future Ready H+M – TBD

CD





# Connections – Efficiency Future Ready Studiotrope – TBD

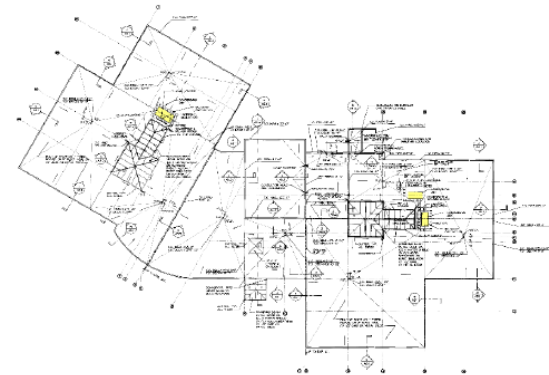
DD



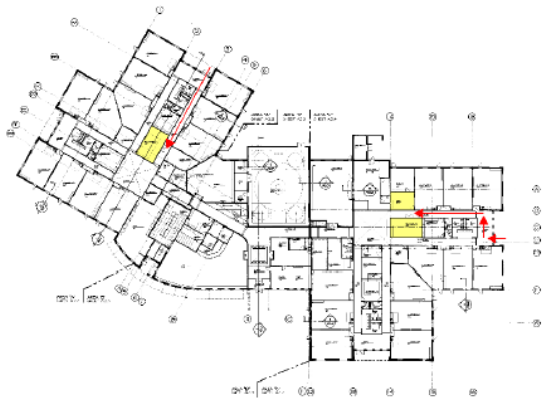
# DW Mechanical 2023

West Woods ES ( 3-condensers, 3 –AHU's),  
Bradford South (3-RTU's, Controls),  
Sobesky (2-boilers)

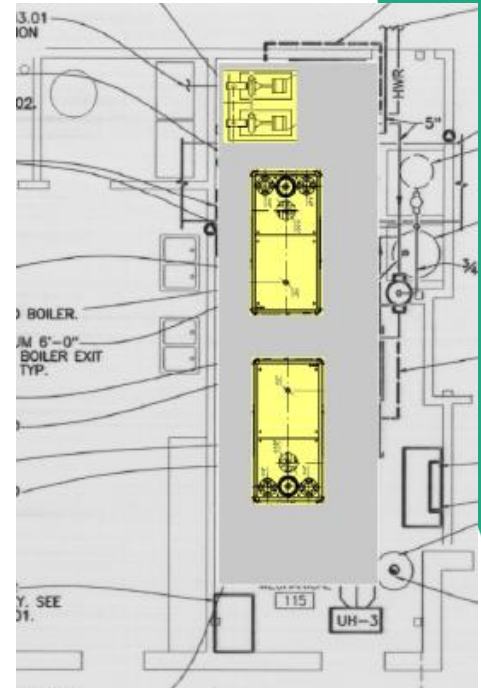
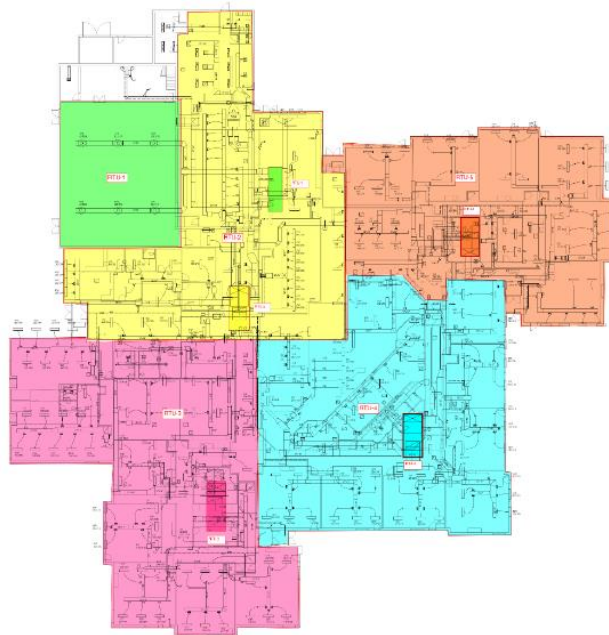
## Columbine – CMGC Himmelman



ACCU locations

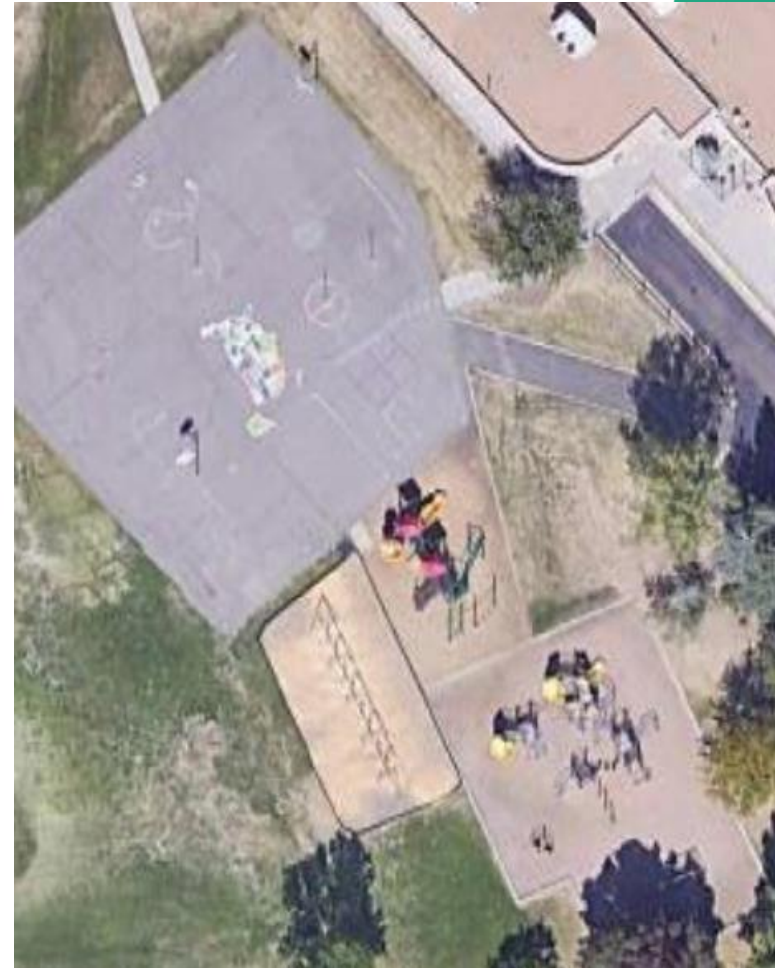
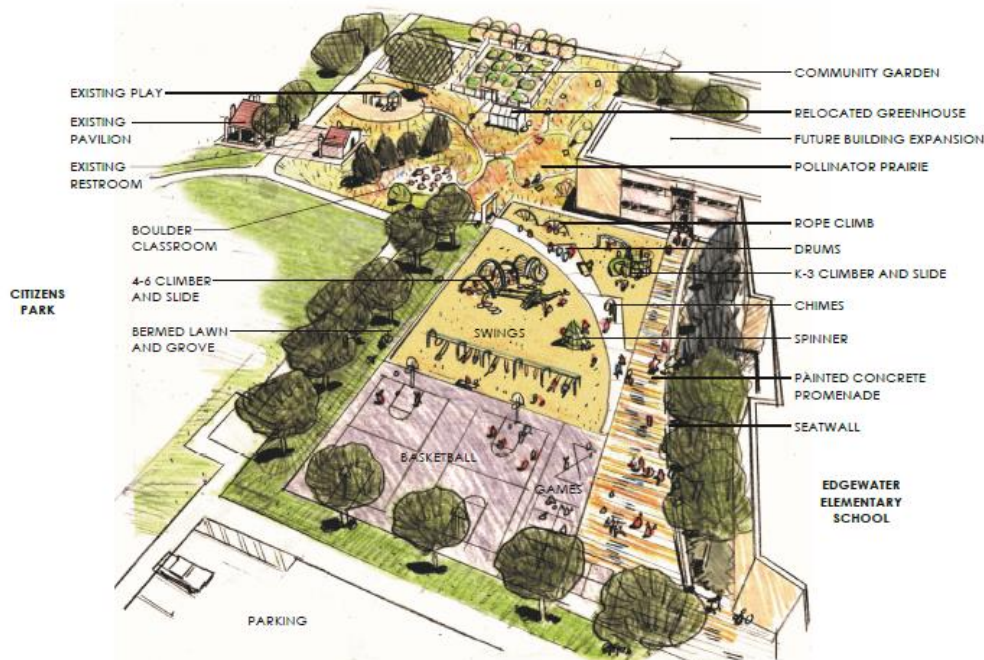


Proposed routing of new AHUs into school.



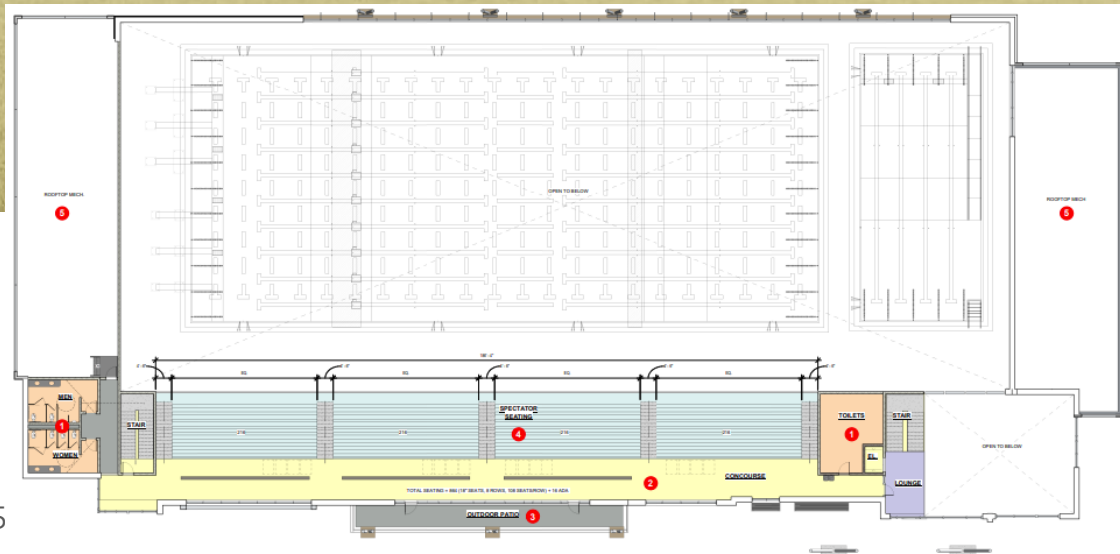
# DW Playground 2023 Edgewater ES, Hutchinson ES

## Design Concepts – TBD



# Meyers Pool

City of Arvada / Jeffco / Apex  
OLC Designs – Saunders CMGC



# Program Verification & Feasibility Study – DLR Group

## Fletcher Miller Special School

BOE Jun 08, 2022 - Special Meeting-Study/Dialogue Session  
Capital Investments for Thriving Schools

Study  
Complete

### Programming

#### Building Program Summary

Test fits will be based upon a 77,014 GSF program composed of small learning communities (suites of spaces including classrooms and other flexible learning spaces) for each cohort. This space program is based upon an enrollment of 100 students, with capacity to flex up to 115, if future staffing supports an increased enrollment. The spaces outlined for the future Fletcher Miller School are sized to accommodate adequate space for collaborative learning, specialized instruction, family and community connections, and specialized storage requirements. Additionally, to support the mobility requirements of this campus, spaces and grossing factors have been sized to either meet or exceed federally mandated American with Disabilities Act (ADA) required clearances.

Throughout each of the DAG meetings, the importance of indoor play space was discussed. These areas may be built into the presented program in a number of ways including within the dining/collaboration spaces within each of the learning communities. Therefore, it has not been included as additional square footage within the program.

PROGRAMMING



### PROGRAM SUMMARY

|                             |                  |
|-----------------------------|------------------|
| <b>Admin Area:</b>          | <b>3,960 SF</b>  |
| <b>Pre-K Learning:</b>      | <b>4,925 SF</b>  |
| <b>K-12 Learning:</b>       | <b>13,590 SF</b> |
| <b>Lighthouse Learning:</b> | <b>5,070 SF</b>  |
| <b>Jeffco Transition:</b>   | <b>3,370 SF</b>  |
| <b>Vocational:</b>          | <b>1,600 SF</b>  |
| <b>Library/Media:</b>       | <b>3,300 SF</b>  |
| <b>Food Service:</b>        | <b>1,260 SF</b>  |
| <b>Art/Music/P.E:</b>       | <b>7,855 SF</b>  |
| <b>Clinic:</b>              | <b>1,190 SF</b>  |
| <b>Therapeutic:</b>         | <b>5,930 SF</b>  |
| <b>Bldg. Support:</b>       | <b>2,960 SF</b>  |
| <b>TOTAL BUILDING AREA</b>  | <b>77,014 SF</b> |

# School Closings & Consolidations

BOE Special Meeting-Study/Dialogue Session  
Thursday, August 25, 2022

## Schools Closing:

Bergen Meadow ES (2024) -----  
Campbell ES (2024?) (ECE Center) -----  
Colorow ES (2024) -----  
Emory ES -----  
  
Glennon Heights ES (2024) -----  
Green Mountain ES -----  
Kullerstrand ES -----  
Molholm ES (2024) -----  
Parr ES (2024) -----  
Peiffer ES (2024) -----  
Peck ES -----  
Sheridan Green -----  
Thomson ES -----  
Vivian ES -----  
Wilmore Davis ES -----  
Witt ES -----

## Consolidating To:

Bergen Valley ES (7CR Addition)  
Vanderhoof & Fremont (Kitchen Work)  
Powderhorn ES  
Lasley ES (ADA, Office & Parking)  
Stein ES (ADA upgrades)  
Belmar ES  
Foothills ES  
Prospect Valley ES (8CR Addition)  
Lumberg ES  
Little ES (2023)  
Kendallvue ES (2023) (Add Kitchen Work)  
Secret ES  
Ryan ES  
Swanson ES (2023)  
Stober ES (5CR Addition + Kitchen)  
Stevens ES  
Lukas ES (Kitchen Work Needed)

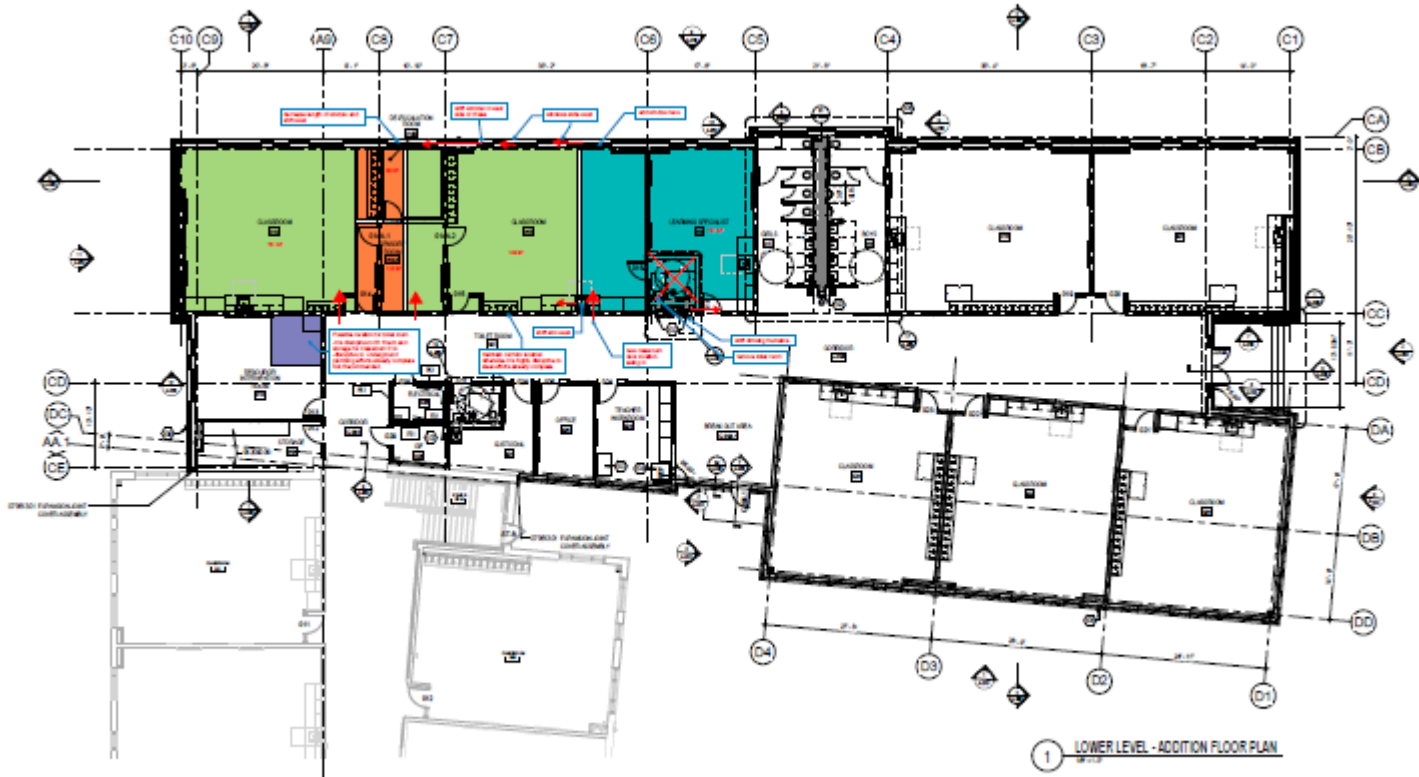
# School Closings & Consolidations

Special Meeting-Study/Dialogue Session

Thursday, August 25, 2022

DD's

## Prospect Valley ES (8CR Addition) MOA & Phipps CMGC



# School Closings & Consolidations

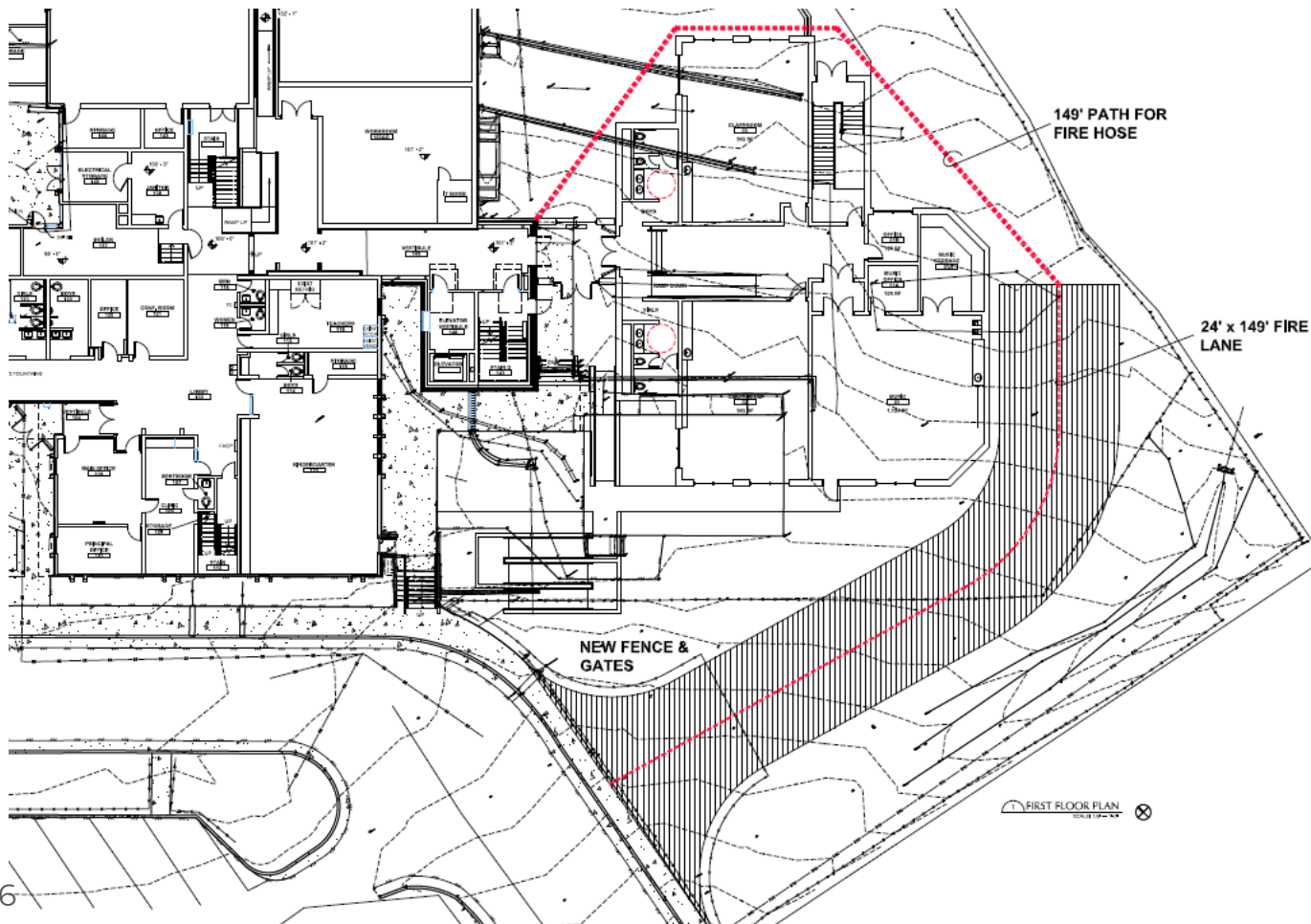
BOE Special Meeting-Study/Dialogue Session

Thursday, August 25, 2022

DD's

**Stober ES**

**(5CR Addition + Kitchen) LOA & CMGC GTC**

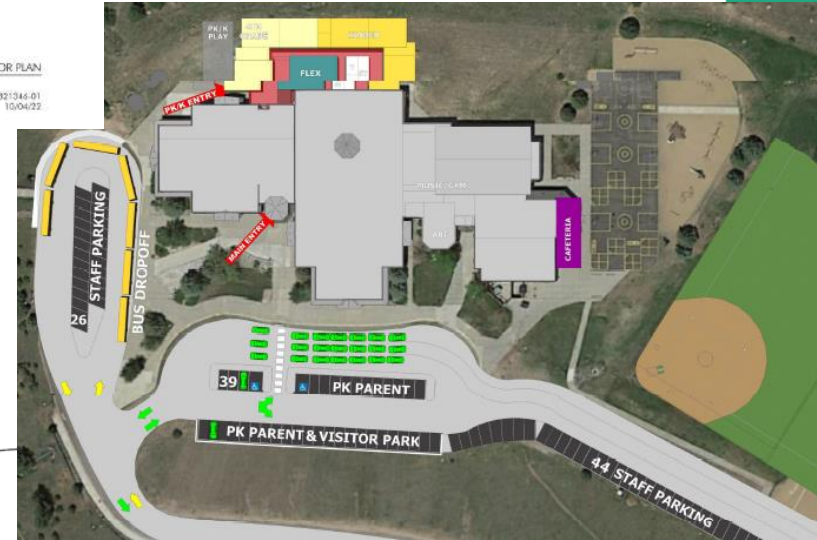
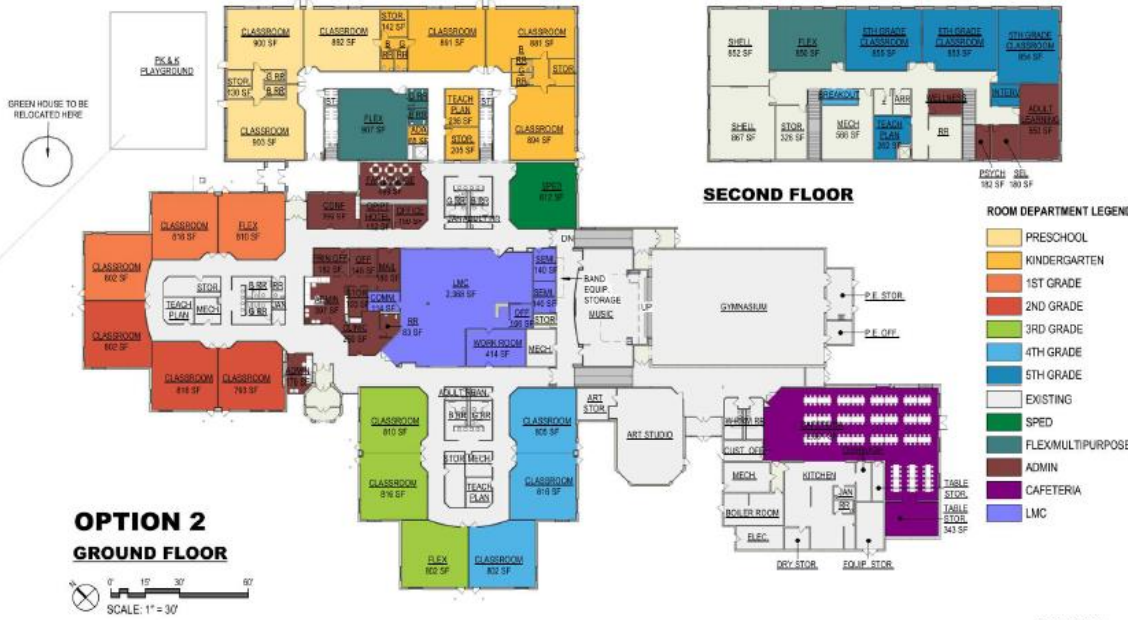




# School Closings & Consolidations

BOE Special Meeting-Study/Dialogue Session  
Thursday, August 25, 2022

## Bergen Valley ES - EUA & GC TBD



# School Closings & Consolidations

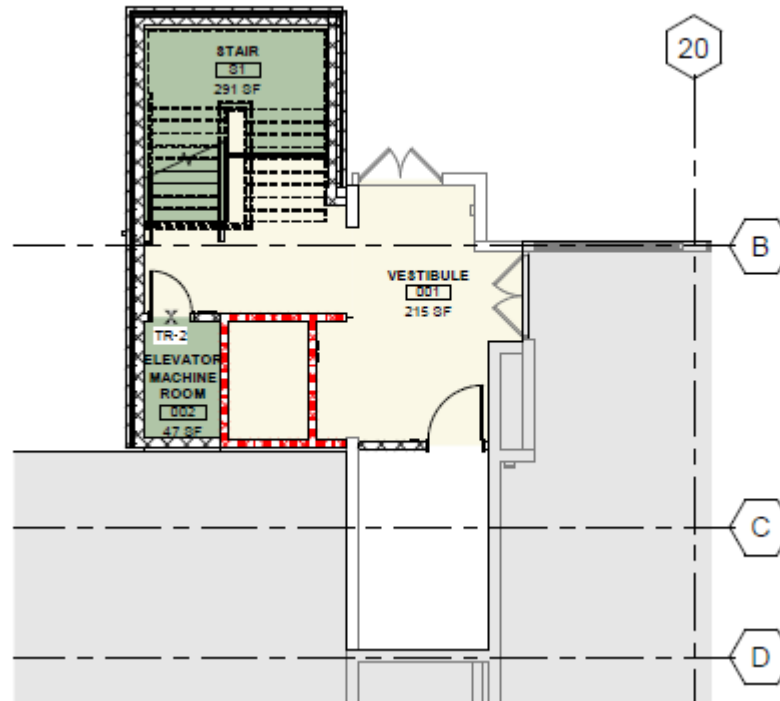
BOE Special Meeting-Study/Dialogue Session  
Thursday, August 25, 2022

DD's

**Stein ES**

**(Elevator/Stair Addition)**

**HCM & CMGC Himmelman**





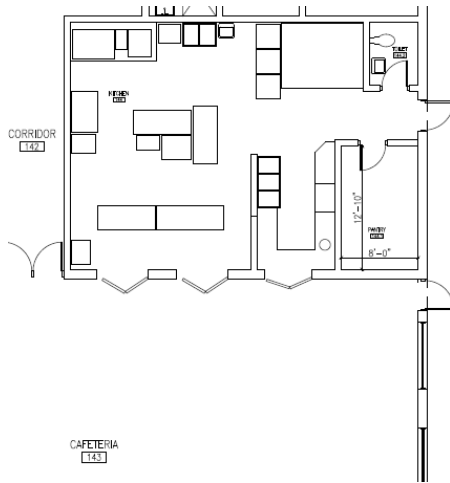
# School Closings & Consolidations

BOE Special Meeting-Study/Dialogue Session  
Thursday, August 25, 2022

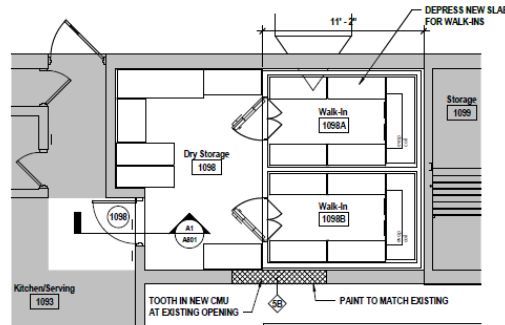
DD's

## Kitchen Improvements

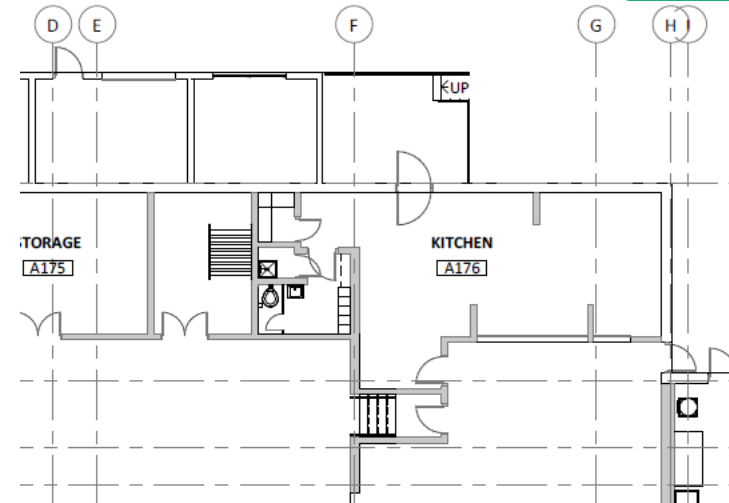
**Fremont ES**  
**(Wilmore Davis Re-design)**  
**Eidos GC TBD**



**Kendallvue ES**  
**H&M GC TBD**  
**1,000 SF**



**Lukas ES**  
**H&M GC TBD**  
**1,000 SF**



# School Closings & Consolidations

BOE Special Meeting-Study/Dialogue Session  
Thursday, August 25, 2022

## Campbell ES (ECE Center) Eidos & GC TBD



# School Closings & Consolidations

BOE Special Meeting-Study/Dialogue Session  
Thursday, August 25, 2022

**DW – Receiving Schools Upgrades – 15 Schools  
A/E RB+B – CMGC TBD**

**Foothills, Vanderhoof, Green Gables, Hutchinson, Maple Grove,  
Powderhorn, Ryan, Secrest, Semper, Sierra DB, Slater, Weber DB,  
Fremont, Wheat Ridge, Standley Lake**



# Next Meeting 12/15/22